



**Boral Construction Materials  
Materials Technical Services**

Unit 4, 3-5 Gibbon Road  
Baulkham Hills NSW 2153 Australia  
PO Box 400, Winston Hills NSW 2153

T: +61 (02) 9624 9900

F: +61 (02) 9624 9999

www.boral.com.au

FILE No.: 250 / 21  
REQUEST No.: 95677

### TEST REPORT

**CLIENT:** P.F. Formation - Maroota  
**PROJECT:** Gravimetric Dust Monitoring at Maroota for July 2021

**TEST PROCEDURE:**  
AS 3580.10.1 – Methods for Sampling and Analysis of Ambient Air  
Method 10.1 – Determination of Particulate Matter, Deposited Matter – Gravimetric Method

Laboratory Sample Number:	256549	256550	256551	256552	256553
Site Location Number:	1	2	3	4	5
Sample Description:	Dust				
Sampling Period:	From	1/07/2021		to	30/07/2021
Date Received:	From	30/07/2021		to	9/08/2021
Date Tested:					

### TEST RESULTS:

Insoluble Solids (g/m <sup>2</sup> month):	0.54	1.37	0.80	0.62	0.65	Uncertainty - 95% Confidence @ Factor 2	
Ash (g/m <sup>2</sup> month):	0.46	1.11	0.72	0.46	0.53		± 0.05
Combustible Matter (g/m <sup>2</sup> month):	0.08	0.26	0.08	0.15	0.11		± 0.03
Soluble Matter (g/m <sup>2</sup> month):	0.33	0.76	0.09	0.44	0.02		
Total Solids (g/m <sup>2</sup> month):	0.87	2.13	0.89	1.06	0.67		± 0.06
Volume of Liquid in the Gauge (mL):	400	450	450	400	400		

### **Notes:**

- Samples were provided by the Client and tested as received.
- Refer to attached graphs.

J.Graham, Mat.File, File.



Approved Signatory *S. Krishnamoorthy* S.Krishnamoorthy

Date 17.8.21 Serial No. CHEM95677.SK.1



Accredited for compliance with ISO/IEC 17025 - Testing  
This report shall not be reproduced except in full without the approval of the Boral MTS Laboratory  
Test results in this Test Report relate only to the samples tested

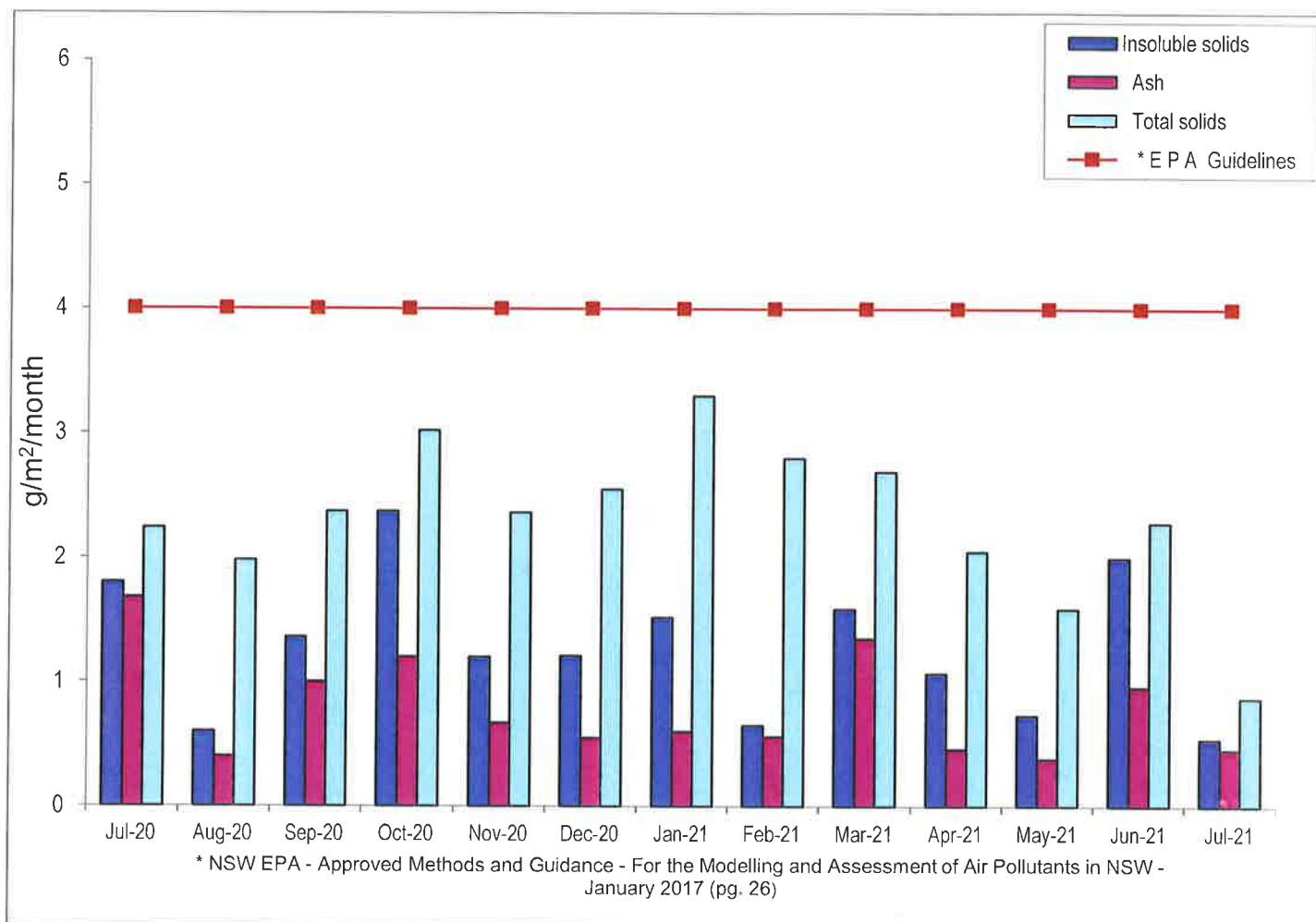


Boral Construction Materials  
Boral Materials Technical Services

## Dust Monitoring

P.F. Formation - Maroota Site 1  
Maroota Public School

	Insoluble solids	Ash	* E P A Guidelines	Total solids
Jul-20	1.80	1.68	4	2.24
Aug-20	0.60	0.40	4	1.98
Sep-20	1.36	1.00	4	2.37
Oct-20	2.37	1.20	4	3.02
Nov-20	1.20	0.67	4	2.36
Dec-20	1.21	0.55	4	2.55
Jan-21	1.52	0.60	4	3.30
Feb-21	0.65	0.56	4	2.80
Mar-21	1.59	1.35	4	2.69
Apr-21	1.07	0.46	4	2.05
May-21	0.73	0.38	4	1.59
Jun-21	2.00	0.96	4	2.28
Jul-21	0.54	0.46	4	0.87



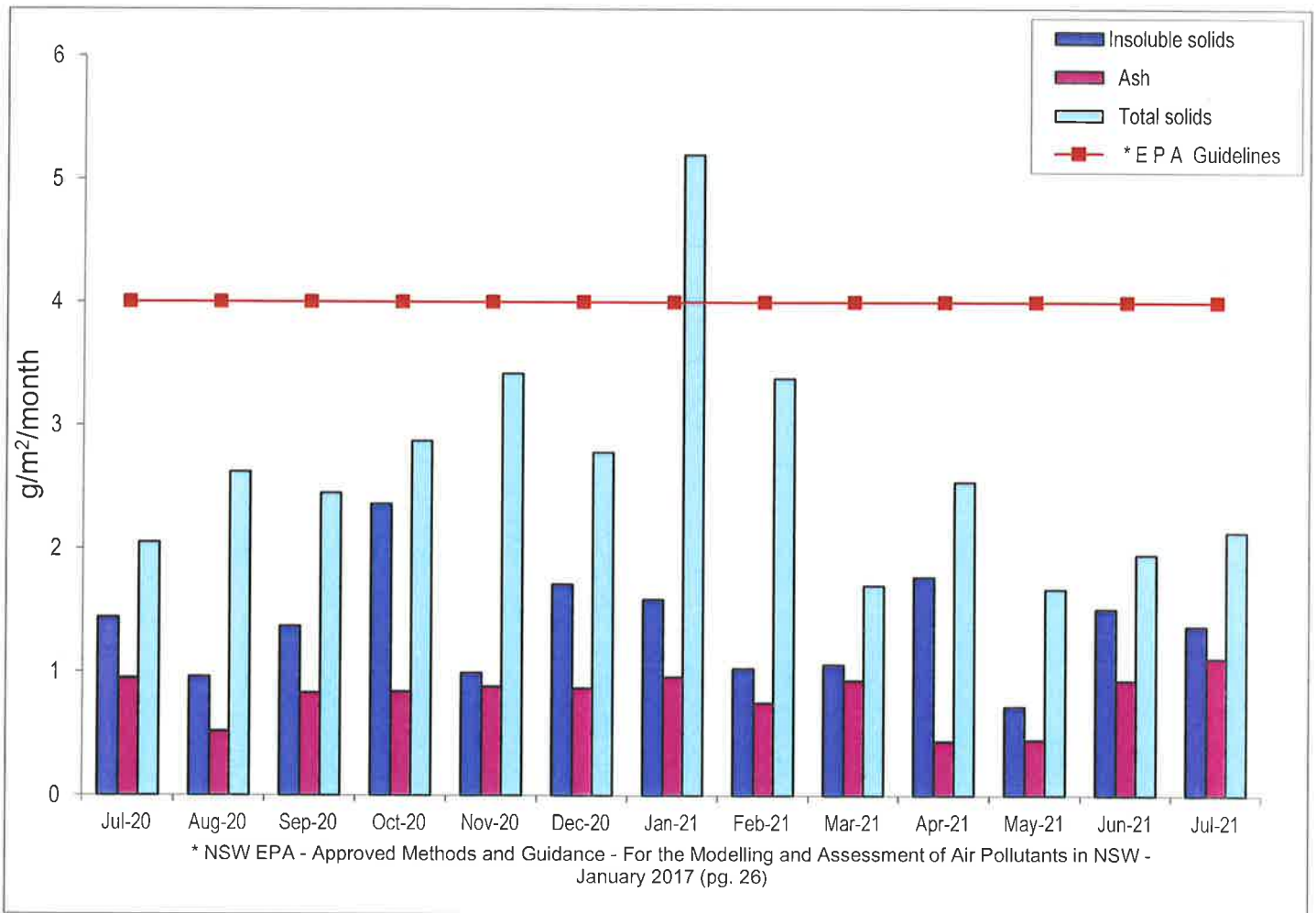


Boral Construction Materials  
Boral Materials Technical Services

## Dust Monitoring

**P.F. Formation - Maroota Site 2**  
**Hitchcock Road**

	Insoluble solids	Ash	* E P A Guidelines	Total solids
Jul-20	1.44	0.95	4	2.05
Aug-20	0.96	0.52	4	2.62
Sep-20	1.37	0.83	4	2.45
Oct-20	2.36	0.84	4	2.87
Nov-20	0.99	0.88	4	3.42
Dec-20	1.71	0.87	4	2.78
Jan-21	1.59	0.96	4	5.20
Feb-21	1.03	0.75	4	3.38
Mar-21	1.06	0.93	4	1.70
Apr-21	1.77	0.44	4	2.54
May-21	0.72	0.45	4	1.67
Jun-21	1.51	0.93	4	1.95
Jul-21	1.37	1.11	4	2.13



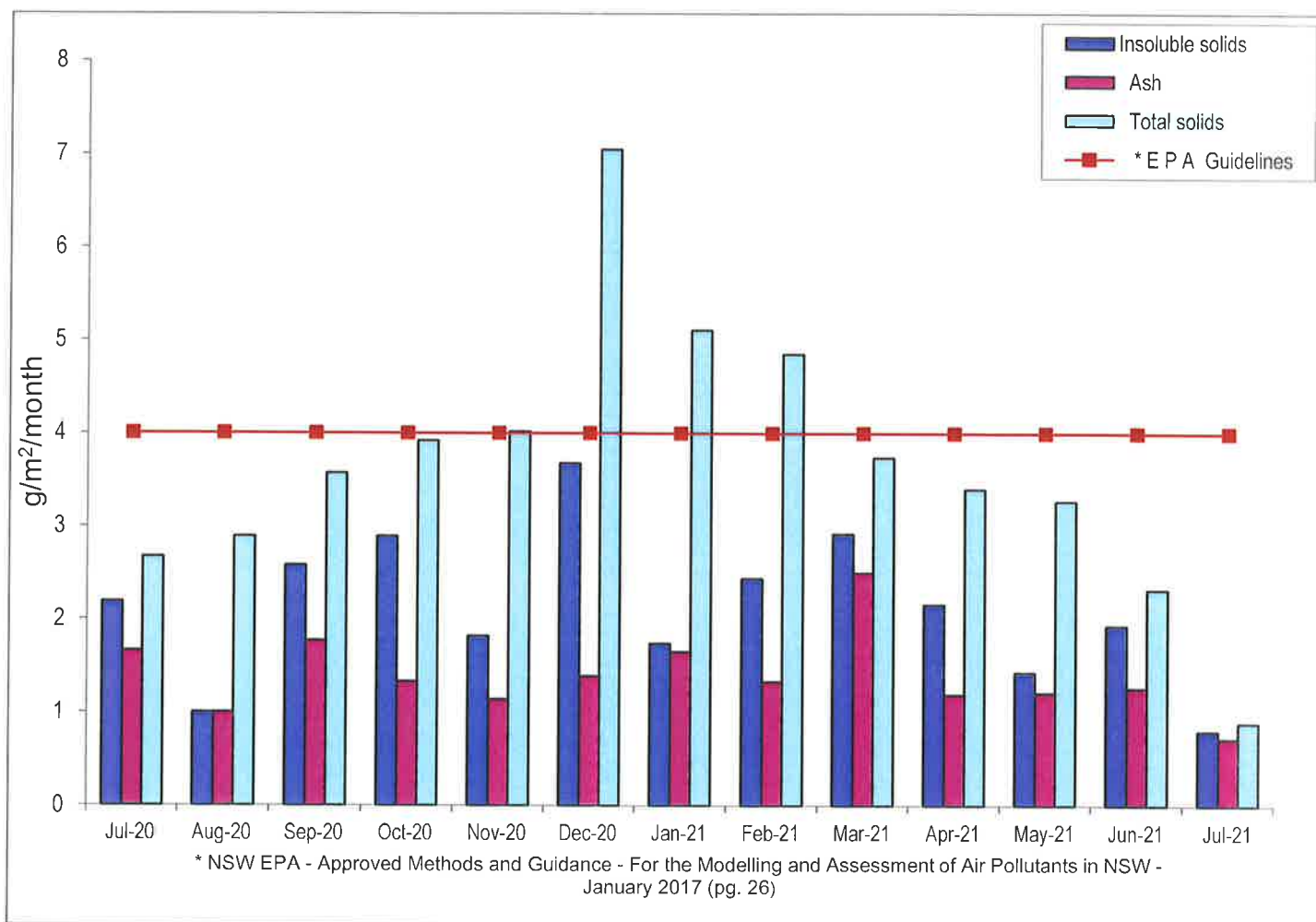


Boral Construction Materials  
Boral Materials Technical Services

## Dust Monitoring

P.F. Formation - Maroota Site 3  
Jurd's House

	Insoluble solids	Ash	* E P A Guidelines	Total solids
Jul-20	2.19	1.66	4	2.67
Aug-20	1.00	1.00	4	2.89
Sep-20	2.58	1.77	4	3.57
Oct-20	2.89	1.33	4	3.92
Nov-20	1.82	1.14	4	4.02
Dec-20	3.68	1.39	4	7.05
Jan-21	1.74	1.65	4	5.11
Feb-21	2.44	1.33	4	4.85
Mar-21	2.92	2.50	4	3.74
Apr-21	2.16	1.19	4	3.40
May-21	1.43	1.21	4	3.27
Jun-21	1.93	1.26	4	2.32
Jul-21	0.80	0.72	4	0.89



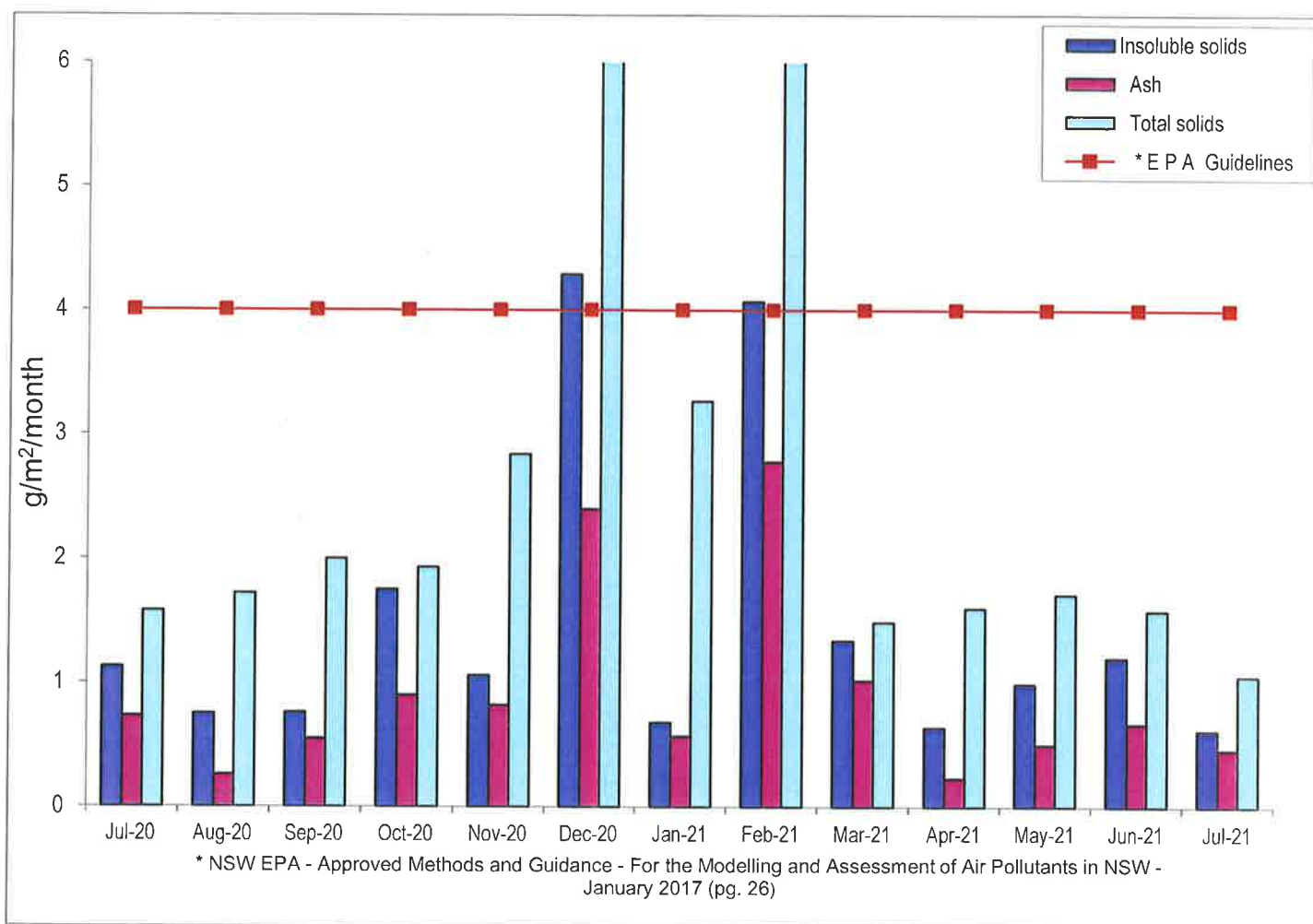


Boral Construction Materials  
Boral Materials Technical Services

### Dust Monitoring

P.F. Formation - Maroota Site 4  
Josh's House (Lot 2 DP 510812)

	Insoluble solids	Ash	* E P A Guidelines	Total solids
Jul-20	1.13	0.73	4	1.58
Aug-20	0.75	0.26	4	1.72
Sep-20	0.76	0.55	4	2.00
Oct-20	1.75	0.90	4	1.93
Nov-20	1.06	0.82	4	2.84
Dec-20	4.29	2.40	4	32.86
Jan-21	0.68	0.57	4	3.27
Feb-21	4.07	2.78	4	21.08
Mar-21	1.34	1.02	4	1.49
Apr-21	0.64	0.23	4	1.60
May-21	0.99	0.50	4	1.71
Jun-21	1.20	0.67	4	1.58
Jul-21	0.62	0.46	4	1.06





Boral Construction Materials  
Boral Materials Technical Services

## Dust Monitoring

P.F. Formation - Maroota Site 5  
Maroota Lodge

	Insoluble solids	Ash	* E P A Guidelines	Total solids
Jul-20	1.27	0.85	4	1.43
Aug-20	0.63	0.30	4	1.78
Sep-20	0.68	0.55	4	1.65
Oct-20	1.42	0.73	4	1.72
Nov-20	0.56	0.40	4	1.45
Dec-20	1.76	0.81	4	3.53
Jan-21	1.27	0.69	4	2.86
Feb-21	0.30	0.12	4	0.75
Mar-21	1.24	1.08	4	1.34
Apr-21	1.44	0.54	4	2.63
May-21	1.08	0.61	4	1.74
Jun-21	1.20	0.67	4	1.58
Jul-21	0.62	0.46	4	1.06

