



**Boral Construction Materials
Technical Services**

Unit 4, 3-5 Gibbon Road
Baulkham Hills NSW 2153 Australia
PO Box 400, Winston Hills NSW 2153

T: +61 (02) 9624 9900
F: +61 (02) 9624 9999

www.boral.com.au

TEST REPORT

CLIENT: P.F. Formation - Maroota

PROJECT: Gravimetric Dust Monitoring at Maroota for December 2021

TEST PROCEDURE:

AS 3580.10.1 – Methods for Sampling and Analysis of Ambient Air
Method 10.1 – Determination of Particulate Matter, Deposited Matter – Gravimetric Method

Laboratory Sample Number:	262480	262481	262482	262483	262484
Site Location Number:	1	2	3	4	5
Sample Description:			Dust		
Sampling Period:	From	1/12/2021	20/01/2022	to	10/01/2022
Date Received:	From	20/01/2022	to	28/01/2022	
Date Tested:	From	20/01/2022	to	28/01/2022	

TEST RESULTS:

Insoluble Solids (g/m ² month):	1.43	1.74	2.89	1.42	0.84
Ash (g/m ² month):	0.60	0.68	1.01	0.38	0.32
Combustible Matter (g/m ² month):	0.83	1.05	1.89	1.04	0.52
Soluble Matter (g/m ² month):	1.14	0.14	0.12	3.25	0.38
Total Solids (g/m ² month):	2.57	1.88	3.01	4.67	1.23
Volume of Liquid in the Gauge (mL):	3400	3150	3700	1900	3600

Notes:

- Samples were provided by the Client and tested as received.
 - Refer to attached graphs.
 - The samples were not within the specified collection time period indicated by the test method. Calculations are based on 40 days exposure.
- J.Graham, Mat.File, File.

Uncertainty - 95% Confidence @ Factor 2

± 0.04

± 0.03

± 0.07



ACCREDITED FOR
TECHNICAL
COMPETENCE

Approved Signatory *S. Krishnamoorthy* S. Krishnamoorthy
Date 28.1.22 Serial No. CHEM97765.SK.1

Accredited for compliance with ISO/IEC 17025 - Testing
This report shall not be reproduced except in full without the approval of the Boral MTS Laboratory
Test results in this Test Report relate only to the samples tested

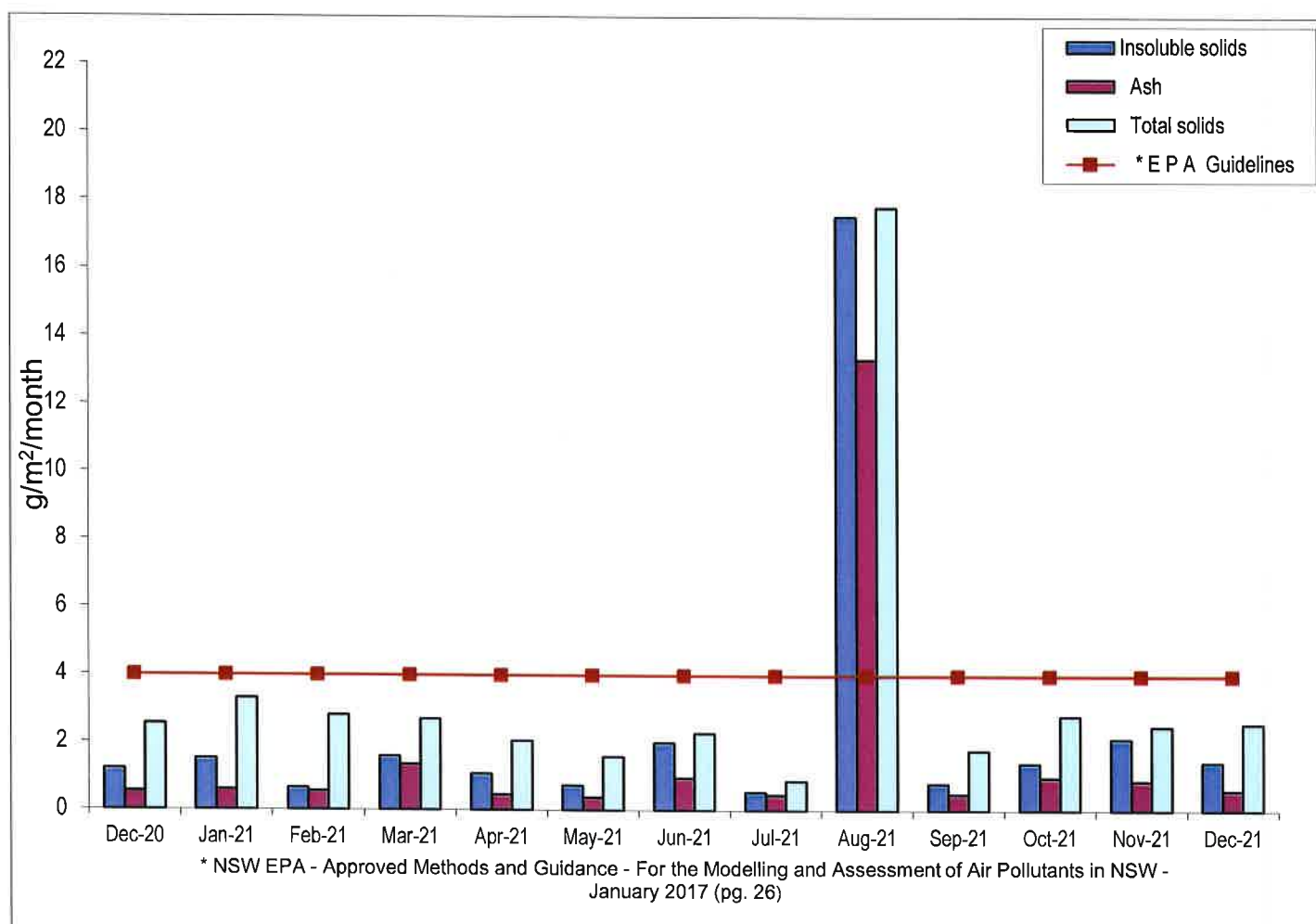


Boral Construction Materials
Boral Materials Technical Services

Dust Monitoring

P.F. Formation - Maroota Site 1
Maroota Public School

	Insoluble solids	Ash	* E P A Guidelines	Total solids
Dec-20	1.21	0.55	4	2.55
Jan-21	1.52	0.60	4	3.30
Feb-21	0.65	0.56	4	2.80
Mar-21	1.59	1.35	4	2.69
Apr-21	1.07	0.46	4	2.05
May-21	0.73	0.38	4	1.59
Jun-21	2.00	0.96	4	2.28
Jul-21	0.54	0.46	4	0.87
Aug-21	17.52	13.33	4	17.79
Sep-21	0.79	0.49	4	1.77
Oct-21	1.40	0.98	4	2.79
Nov-21	2.12	0.88	4	2.49
Dec-21	1.43	0.60	4	2.57



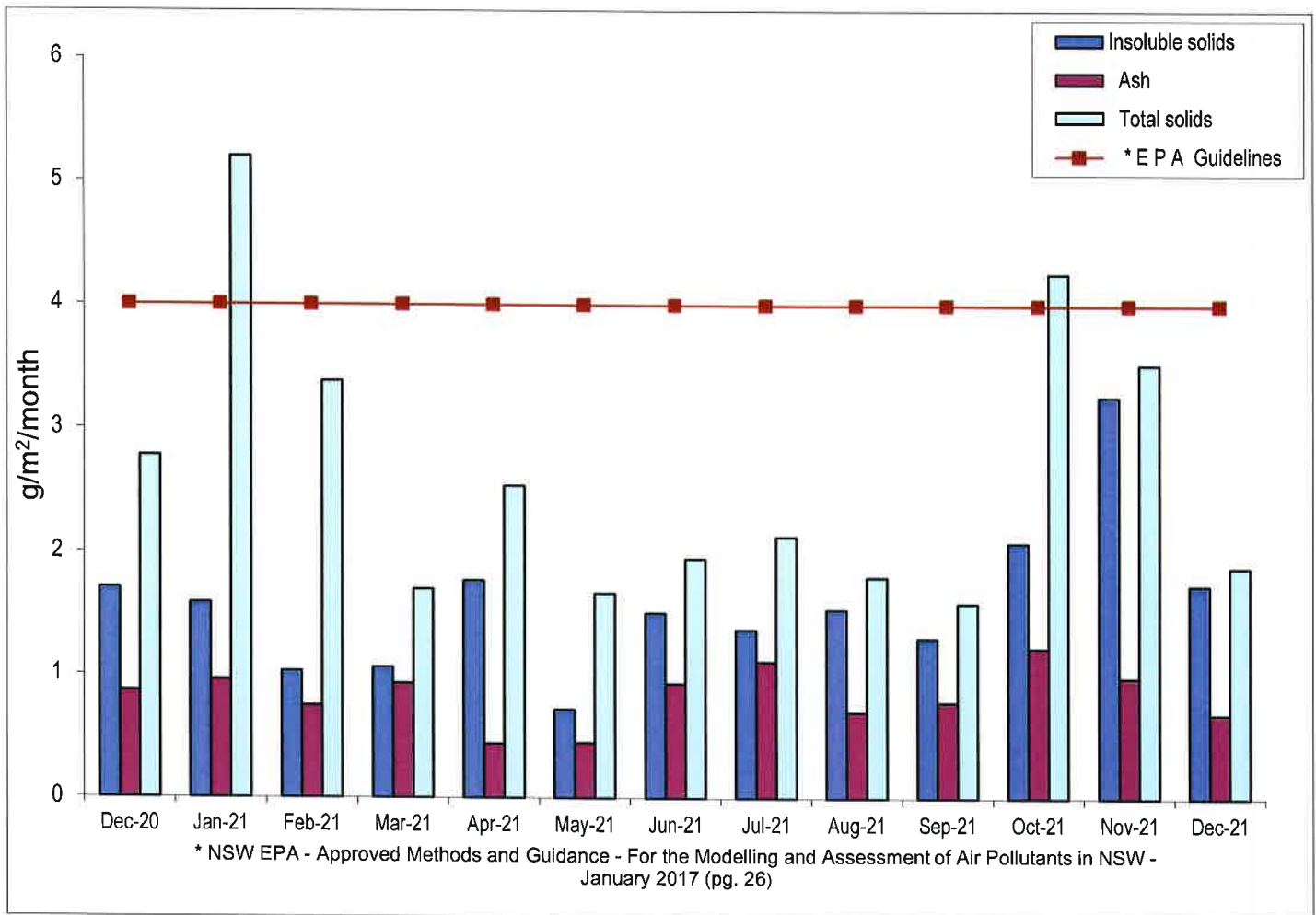


Boral Construction Materials
Boral Materials Technical Services

Dust Monitoring

P.F. Formation - Maroota Site 2
Hitchcock Road

	Insoluble solids	Ash	* E P A Guidelines	Total solids
Dec-20	1.71	0.87	4	2.78
Jan-21	1.59	0.96	4	5.20
Feb-21	1.03	0.75	4	3.38
Mar-21	1.06	0.93	4	1.70
Apr-21	1.77	0.44	4	2.54
May-21	0.72	0.45	4	1.67
Jun-21	1.51	0.93	4	1.95
Jul-21	1.37	1.11	4	2.13
Aug-21	1.54	0.70	4	1.80
Sep-21	1.30	0.78	4	1.59
Oct-21	2.08	1.22	4	4.25
Nov-21	3.26	0.98	4	3.52
Dec-21	1.74	0.68	4	1.88



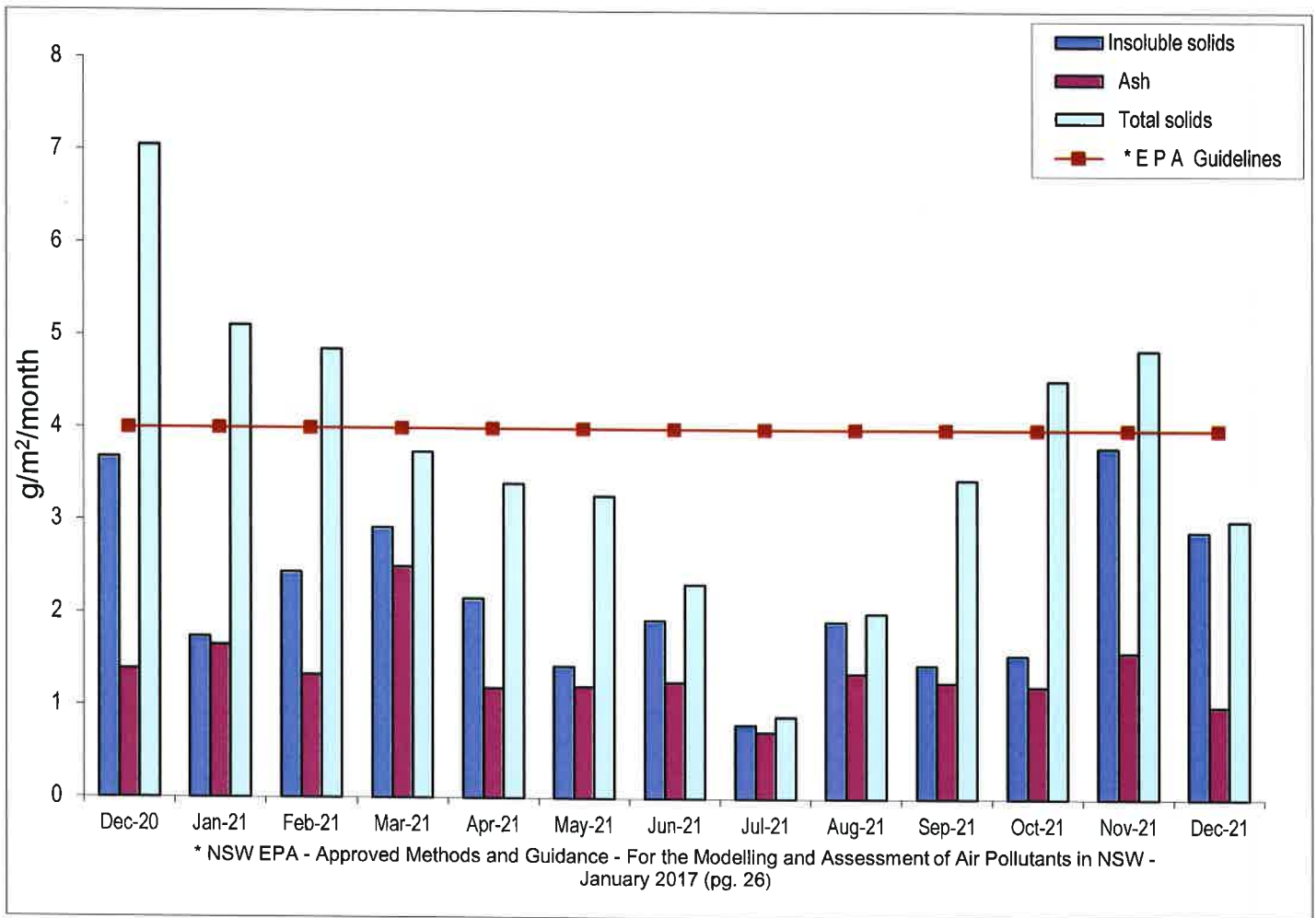


Boral Construction Materials
Boral Materials Technical Services

Dust Monitoring

P.F. Formation - Maroota Site 3
Jurd's House

	Insoluble solids	Ash	* E P A Guidelines	Total solids
Dec-20	3.68	1.39	4	7.05
Jan-21	1.74	1.65	4	5.11
Feb-21	2.44	1.33	4	4.85
Mar-21	2.92	2.50	4	3.74
Apr-21	2.16	1.19	4	3.40
May-21	1.43	1.21	4	3.27
Jun-21	1.93	1.26	4	2.32
Jul-21	0.80	0.72	4	0.89
Aug-21	1.92	1.36	4	2.01
Sep-21	1.45	1.26	4	3.45
Oct-21	1.56	1.22	4	4.53
Nov-21	3.80	1.59	4	4.86
Dec-21	2.89	1.01	4	3.01



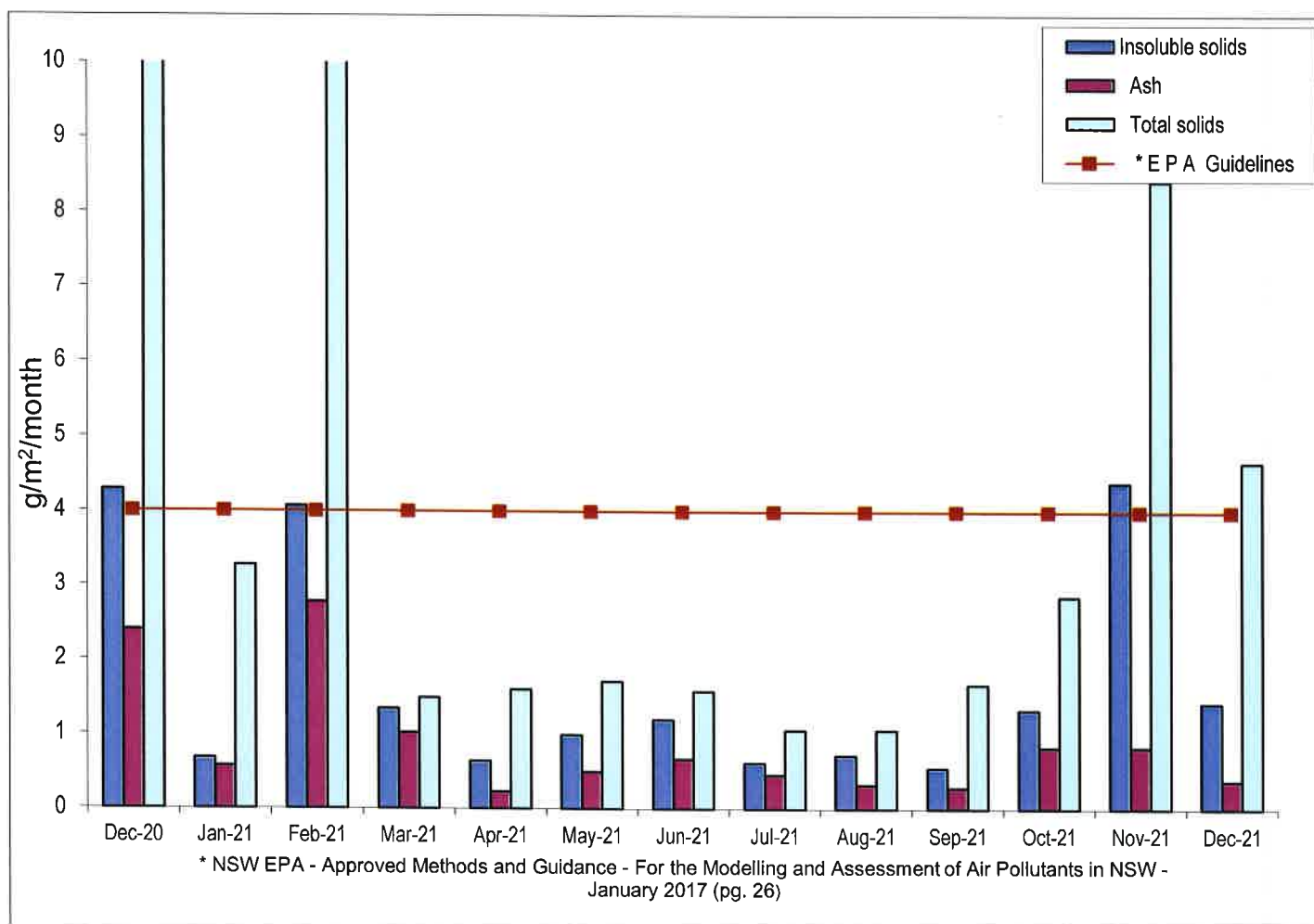


Boral Construction Materials
Boral Materials Technical Services

Dust Monitoring

P.F. Formation - Maroota Site 4
Josh's House (Lot 2 DP 510812)

	Insoluble solids	Ash	* E P A Guidelines	Total solids
Dec-20	4.29	2.40	4	32.86
Jan-21	0.68	0.57	4	3.27
Feb-21	4.07	2.78	4	21.08
Mar-21	1.34	1.02	4	1.49
Apr-21	0.64	0.23	4	1.60
May-21	0.99	0.50	4	1.71
Jun-21	1.20	0.67	4	1.58
Jul-21	0.62	0.46	4	1.06
Aug-21	0.72	0.33	4	1.06
Sep-21	0.55	0.29	4	1.67
Oct-21	1.33	0.83	4	2.86
Nov-21	4.39	0.83	4	8.42
Dec-21	1.42	0.38	4	4.67





Boral Construction Materials
Boral Materials Technical Services

Dust Monitoring

P.F. Formation - Maroota Site 5
Maroota Lodge

	Insoluble solids	Ash	* E P A Guidelines	Total solids
Dec-20	1.76	0.81	4	3.53
Jan-21	1.27	0.69	4	2.86
Feb-21	0.30	0.12	4	0.75
Mar-21	1.24	1.08	4	1.34
Apr-21	1.44	0.54	4	2.63
May-21	1.08	0.61	4	1.74
Jun-21	1.20	0.67	4	1.58
Jul-21	0.65	0.53	4	0.67
Aug-21	0.74	0.52	4	1.19
Sep-21	0.45	0.34	4	1.45
Oct-21	1.53	1.14	4	2.49
Nov-21	1.99	0.63	4	2.52
Dec-21	0.84	0.32	4	1.23

