

PF Formation

HITCHCOCK ROAD MAROOTA

Sand Extraction and Rehabilitation Project

ANNUAL ENVIRONMENTAL MANAGEMENT REPORT 2020-2021

ATTACHMENTS

- 1.** Project approval
- 2.** EPA Licence Annual Return
- 3.** Variation to Licence No. 3407
- 4.** DPIE letter - Rehabilitation Inspection
- 5.** Monthly Environmental Operational Procedures Checklist
- 6.** Location Weather Chart
- 7.** Site Current Photos
- 8.** Current Site Plan
- 9.** Weighbridge Verification Certificate
- 10.** CCC Meeting Minutes
- 11.** Noise Management Report
- 12.** Air Quality Report
- 13.** Ground Water Report
- 14.** Rehabilitation Report

ATTACHMENT 1

PROJECT APPROVAL

Project Approval

Section 75J of the *Environmental Planning and Assessment Act 1979*

I approve the project referred to in Schedule 1, subject to the conditions set out in Schedules 2 to 5.

These conditions are required to:

- prevent, minimise, and/or offset adverse environmental impacts;
- set standards and performance measures for acceptable environmental performance;
- require regular monitoring and reporting; and
- provide for on-going environmental management of the project.



Hon Kristina Keneally MP
Minister for Planning

Sydney

3 February 2009

SCHEDULE 1

Project Application:	06_0104
Proponent:	PF Formation
Approval Authority:	Minister for Planning
Land:	See Appendix 1
Project:	Hitchcock Road Sand Project

TABLE OF CONTENTS

DEFINITIONS	3
ADMINISTRATIVE	4
Obligation to Minimise Harm to the Environment	4
Terms of Approval	4
Existing Sand Mining Consent	4
Limits on Approval	4
Management Plans/Monitoring Programs	5
Demolition	5
Protection of Public Infrastructure	5
Operation of Plant and Equipment	5
Crown Land	5
Section 94 Contributions	5
ENVIRONMENTAL PERFORMANCE	6
General Extraction and Processing Provisions	6
Noise	6
Air Quality	8
Meteorological Monitoring	8
Water	9
Landscape Management	10
Aboriginal Heritage	11
Traffic and Transport	11
Visual	11
Waste Management	12
Emergency and Hazards Management	12
Production Data	12
ADDITIONAL PROCEDURES	13

Notification of Landowners	13
Independent Review	13
ENVIRONMENTAL MANAGEMENT, MONITORING, REPORTING & AUDITING	14
Environmental Management Strategy	14
Environmental Monitoring Program	14
Reporting	14
Independent Environmental Audit	14
Community Consultative Committee	15
Access to Information	15
APPENDIX 1: SCHEDULE OF LAND	16
APPENDIX 2: GENERAL LAYOUT OF PROJECT	17
APPENDIX 3: STATEMENT OF COMMITMENTS	19
APPENDIX 4: NOISE ASSESSMENT LOCATIONS	25
APPENDIX 5: VEGETATION OFFSET PLAN	26
APPENDIX 6: CRITERIA TO MONITOR SUCCESS OF REVEGETATION	27
APPENDIX 7: FINAL LANDFORM PLANS	29
APPENDIX 8: INDEPENDENT DISPUTE RESOLUTION PROCESS	30

DEFINITIONS

AEMR	Annual Environmental Management Report
Council	The Hills Shire Council
Day	The period from 7.00am to 6.00pm on Monday to Saturday, and
NSW Government Department of Planning	

8.00am to 6.00pm on Sundays and Public Holidays

DECC Department of Environment and Climate Change

Department Department of Planning

Director-General Director-General of the Department of Planning, or delegate

DPI Department of Primary Industries

DWE Department of Water and Energy

EA Environmental Assessment for the project titled *Hitchcock Road Sand Extraction and Rehabilitation Project Environmental Assessment and Appendices* (3 volumes), dated November 2007, prepared by DFA

Consultants, including the response to submissions and preferred project report

EP&A Act *Environmental Planning and Assessment Act 1979*

EP&A Regulation *Environmental Planning and Assessment Regulation 2000*

EPL Environment Protection Licence issued under the *Protection of the Environment Operations Act 1997*

Evening The period from 6.00pm to 10.00pm

Extraction Area The land described as the extraction area in Appendix 1

Land Land means the whole of a lot, or contiguous lots owned by the same landowner, in a current plan registered at the Land Titles Office at the date of this approval

Minister Minister for Planning, or delegate

Night The period from 10.00pm to 7.00am on Monday to Saturday, and 10.00pm to 8.00am on Sundays and Public Holidays

Privately owned land Land not owned by a public agency or the Proponent or its related companies

Preferred Project Report The Proponent's Preferred Project Report dated September 2008, prepared by DFA Consultants, as modified in the Proponent's email to the Department of 18 November 2008

Project The development as described in the EA

Proponent PF Formation, or its successors in title

Response to Submissions The Proponent's response to issues raised in submissions, dated March 2008, prepared by DFA Consultants, and subsequent submissions to the Department dated 27 August 2008

RTA	Roads and Traffic Authority
SHTW	Sydney Hinterland Transition Woodland
Site	Land to which the project application applies
Statement of Commitments	The Proponent's commitments in Appendix 3
Strategy A, Strategy B	The alternative rehabilitation proposals described in the preferred project report
Vegetation Offset	The conservation and enhancement program described in the preferred project report, to occur on the land shown on the plan in Appendix 5
VENM	Virgin Excavated Natural Material, as defined in the <i>Protection of the Environment Operations Act 1997</i>

SCHEDULE 2 ADMINISTRATIVE

Obligation to Minimise Harm to the Environment

1. The Proponent shall implement all reasonable and feasible measures to prevent and/or minimise any harm to the environment that may result from the construction, operation, or rehabilitation of the project.

Terms of Approval

2. The Proponent shall carry out the project generally in accordance with the:
 - (a) EA;
 - (b) preferred project report; (c) statement of commitments; and (d) conditions of this approval.

Notes:

- The layout of the project is shown in the figure in Appendix 2; and
- The statement of commitments is included in Appendix 3.

3. If there is any inconsistency between the above:
 - (a) the preferred project report shall prevail over the EA; (b) the conditions of this approval shall prevail generally, to the extent of the inconsistency.
4. The Proponent shall comply with any reasonable requirement/s of the Director-General arising from the Department's assessment of:
 - (a) any reports, plans, programs or correspondence that are submitted in accordance with the conditions of this approval; and
 - (b) the implementation of any actions or measures contained in these reports, plans, programs or correspondence.

Existing Sand Mining Consent

5. Subject to an agreement in accordance with condition 7 below, the Proponent may accept material extracted from Lot 2 DP 555184 and Lot 1 DP 34599 in accordance with the development consent issued by the Land and Environment Court on 14 July 1998 to be transported across the site and to the slurry plant on Lot 1 DP 570966 via the slurry pipeline and processed on Lot 198 DP 752025.

Limits on Approval

6. Extraction and processing operations may take place until 30 November 2028.

Note: Under this approval, the Proponent is required to rehabilitate the site and provide offsets to the satisfaction of the Director-General. Consequently this approval will continue to apply in all other respects other than the right to conduct extraction and processing operations until the site has been rehabilitated and the offset provided to a satisfactory standard.

7. The quantity of processed material produced at the site, together with material produced on Lot 2 DP 555184 and Lot 1 DP 34599 in accordance with the development consent issued by the Land and Environment Court on 14 July 1998, shall not exceed 400,000 tonnes a year.

Prior to the commencement of any processing of extractive material (under the above consent) from activities on Lot 2 DP 555184 or Lot 1 DP 34599, the Proponent shall demonstrate, to the satisfaction of the Director-General, that it has reached an agreement with the owners of those Lots regarding the proportion of the extraction limit as it applies to each Lot.

8. The Proponent shall restrict total laden truck movements associated with the project to:
- (a) 200 per day, for the Proponent's combined operations at Maroota;
 - (b) 20 per day, for trucks importing VENM to the site; and
 - (c) 10 per day, for trucks entering/exiting the site between 6.00am and 7.00am.

Note: For the avoidance of doubt, 200 is the maximum laden truck movement volume allowed on any one day, including the VENM and early morning truck movements.

9. The Proponent shall not undertake any extraction within 2 metres of the established wet weather groundwater level.

Note: The wet weather groundwater level shall be established in accordance with condition 3 of Schedule 3.

10. The Proponent shall not disturb any SHTW vegetation (as shown on the plan in Appendix 5) on site without the prior written approval of the Director-General. In seeking this approval the Proponent shall demonstrate, to the satisfaction of the Director-General, that it has established at least 3.7 hectares of SHTW on the site, to a standard that meets the criteria in Appendix 6.

Note: This demonstration must include an assessment by a suitably qualified and independent ecologist.

Management Plans / Monitoring Programs

11. With the approval of the Director-General, the Proponent may submit any management plan or monitoring program required by this approval on a progressive basis.

Demolition

12. The Proponent shall ensure that all demolition work is carried out in accordance with *AS 2601-2001: The Demolition of Structures*, or its latest version.

Protection of Public Infrastructure

13. The Proponent shall:

- (a) repair, or pay all reasonable costs associated with repairing, any public infrastructure that is damaged by the project; and
- (b) relocate, or pay all reasonable costs associated with relocating, any public infrastructure that needs to be relocated as a result of the project.

Operation of Plant and Equipment

14. The Proponent shall ensure that all plant and equipment used at the site is:

- (a) maintained in a proper and efficient condition; and
- (b) operated in a proper and efficient condition.

Crown Land

15. The Proponent shall not commence any development authorised by this approval on Crown land without the prior approval of the Department of Lands.

Section 94 Contributions

16. The Proponent shall pay a monthly contribution to the Council for the upgrade and maintenance of roads in accordance with Baulkham Hills Shire Council's section 94 plan in force at the date of this approval.

SCHEDULE 3 ENVIRONMENTAL PERFORMANCE

GENERAL EXTRACTION AND PROCESSING PROVISIONS

Identification of Boundaries

1. Within 3 months of the date of this approval, or as otherwise agreed by the Director-General, the Proponent shall:

- (a) engage an independent registered surveyor to survey the boundaries of the approved limit of extraction and the approved ancillary work areas;
- (b) submit a survey plan of these boundaries to the Director-General; and
- (c) ensure that these boundaries are clearly marked at all times in a permanent manner that allows operating staff and inspecting officers to clearly identify those limits.

Note: The limit of extraction and ancillary areas is shown conceptually on the layout plans in Appendix 2, as amended/clarified by the conditions below.

General Limits of Extraction

2. Notwithstanding the layout plans in Appendix 2, the Proponent shall not undertake extraction within:

- (a) 30 metres of Hitchcock Road; and
- (b) 10 metres of the property boundary of Lot 2 DP 555184, unless sand extraction has commenced on that lot, and extraction in this buffer has been agreed by the Director-General.

Maximum Extraction Depth Map

- 3. The Proponent shall:
 - (a) establish the wet weather groundwater level for the site based on all available (and at least 12 months) site specific groundwater monitoring data;
 - (b) engage a suitably qualified and experienced expert to establish the maximum extraction depths to which extraction can be undertaken on site, to comply with condition 9 of Schedule 2;
 - (c) submit a Maximum Extraction Depth Map (contour map or similar) for the project to the Director-General within 3 months of the date of this approval; and (d) comply with the extraction depths specified in the map, to the satisfaction of the Director-General.
- 4. Within 3 months of the completion of the Independent Environmental Audit (see condition 6 of Schedule 5), the Proponent shall review and update the Maximum Extraction Depth Map for the project to the satisfaction of the Director-General.

NOISE

Operational Noise Assessment Criteria

- 5. The Proponent shall ensure that the noise generated by the project does not exceed the noise impact assessment criteria in Table 1 at any residence or on more than 25 per cent of any privately-owned land.

Noise Assessment Location	Day	Night	
	L _{Aeq} (15 minute)	L _{Aeq} (15 minute)	L _{A1} (1 minute)
R1 - Hammond	41	35	45
R2 – Hitchcock	40	35	45
R5 – Pignataro	42	35	45
R6 – Camilleri	40	35	45
R7 – Maroota Public School	36 _{(L_{Aeq}(1 Hour))}	N/A	N/A
R8 – Portelli	39	35	45
R9 – Young	39	35	45
R10 - Tornatola	39	35	45

Table 1: Noise Impact Assessment Criteria

Notes:

- To determine compliance with the $L_{Aeq(15 \text{ minute})}$ noise limits, noise from the project is to be measured at the most affected point within the residential boundary, or at the most affected point within 30 metres of the dwelling where the dwelling is more than 30 metres from the boundary. Where it can be demonstrated that direct measurement of noise from the project is impractical, alternative means of determining compliance may be accepted (see Chapter 11 of the NSW Industrial Noise Policy). The modification factors in Section 4 of the NSW Industrial Noise Policy shall also be applied to the measured noise level where applicable.
- To determine compliance with the $L_{A1(1 \text{ minute})}$ limit, noise from the project is to be measured at 1 metre from the dwelling façade.
- The noise limits apply under meteorological conditions of:
 - wind speed up to 3m/s at 10m above ground level;
 - temperature inversion conditions of up to 3 degrees C/100m and wind speed up to 2m/s at 10m above the ground;
 where the wind velocity and temperature gradients are determined to be relevant to the project site in accordance with the NSW Industrial Noise Policy.
- The Director-General may relax the noise limits in Table 1 for any property where the Proponent has an agreement with the relevant owner/s to generate higher noise levels, and the Proponent has advised the Department in writing of the terms of this agreement.
- For more information on the noise assessment locations see Appendix 4.

Cumulative Noise Criteria

6. The Proponent shall take all reasonable and feasible measures to ensure that the noise generated by the project combined with the noise generated by other extractive industries does not exceed the following amenity criteria on any privately owned land, to the satisfaction of the Director-General:

- $L_{Aeq(11 \text{ hour})}$ 50 dB(A) – Day;
- $L_{Aeq(4 \text{ hour})}$ 45 dB(A) – Evening; and
- $L_{Aeq(9 \text{ hour})}$ 40 dB(A) – Night.

Operating Hours

7. The Proponent shall comply with the operating hours in Table 2.

Activity	Day	Time
	Monday - Friday	7.00am to 6.00pm
	Saturday	8.00am to 1.00pm
	Sunday and Public Holidays	None
	Monday – Saturday	7.00am to 6.00pm
	Sunday and Public Holidays	None
	Monday – Saturday	6.00am to 6.00pm
	Sunday and Public Holidays	None
	Monday – Saturday	7.00am to 6.00pm
	Sunday and Public Holidays	None

Table 2: Operating Hours

Notes:

- Product transportation prior to 7.00am is restricted as per condition 8 of Schedule 2.
- Maintenance activities may be conducted outside the hours in Table 2 provided that the activities are not audible at any residence beyond the boundary of the site.

- *This condition does not apply to delivery of material if that delivery is required by police or other authorities for safety reasons, and/or the operation or personnel or equipment are endangered. In such circumstances, notification is to be provided to DECC and the affected residents as soon as possible, or within a reasonable period in the case of emergency.*

Noise Management Plan

8. The Proponent shall prepare and implement a Noise Management Plan for the project to the satisfaction of the Director-General. This plan shall:
 - (a) be submitted to the Director-General within 3 months of the date of this approval;
 - (b) be prepared in consultation with DECC;
 - (c) include details of how the noise performance of the project would be monitored, and include a noise monitoring protocol for evaluating compliance with the relevant noise limits in this approval; and
 - (d) include an investigation and assessment (including modelling) of additional reasonable and feasible noise mitigation measures that would be implemented to ensure that noise emissions at all stages of the project comply with the noise impact assessment criteria in Table 1.

Note: The EA predicted that receiver locations R5, R6, R9 and R10 would exceed the applicable noise criteria by between 2 and 5 decibels, during worst case operations.

9. If the additional noise mitigation measures identified in condition 8(d) are not able to reduce noise levels to within 2 decibels of the impact assessment criteria in Table 1 then, upon receiving a written request from the applicable landowner, the Proponent shall implement additional noise mitigation measures such as double glazing, insulation, and/or air conditioning at any residence on the land in consultation with the landowner.

These additional mitigation measures must be reasonable and feasible.

If within 3 months of receiving this request from the landowner, the Proponent and the landowner cannot agree on the measures to be implemented, or there is a dispute about the implementation of these measures, then either party may refer the matter to the Director-General for resolution.

AIR QUALITY

Impact Assessment Criteria

10. The Proponent shall ensure that dust generated by the project does not cause exceedances of the criteria listed in Tables 3, 4 and 5 at any residence or on more than 25 per cent of any privately owned land.

Pollutant	Averaging period	Criterion
Total suspended particulate (TSP) matter	Annual	90 µg/m ³
Particulate matter < 10 µm (PM ₁₀)	Annual	30 µg/m ³

Table 3: Long Term Impact Assessment Criteria for Particulate Matter

Pollutant	Averaging period	Criterion
Particulate matter < 10 µm (PM ₁₀)	24 hour	50 µg/m ³

Table 4: Short Term Impact Assessment Criteria for Particulate Matter

Pollutant	Averaging period	Maximum increase in deposited dust level	Maximum total deposited dust level
Deposited dust	Annual	2 g/m ² /month	4 g/m ² /month

Table 5: Long Term Impact Assessment Criteria for Deposited Dust

Note: Deposited dust is assessed as insoluble solids as defined by Standards Australia, 1991, AS 3580.10.11991: Methods for Sampling and Analysis of Ambient Air - Determination of Particulates - Deposited Matter - Gravimetric Method.

Operating Conditions

11. The Proponent shall ensure any visible air pollution generated by the project is assessed regularly, and that quarrying operations are relocated, modified, and/or stopped as required to minimise air quality impacts on privately owned land.

Air Quality Monitoring

12. The Proponent shall prepare and implement an Air Quality Monitoring Program for the project to the satisfaction of the Director-General. This program shall:
- (a) be submitted to the Director-General for approval within 3 months of the date of this approval; (b) be prepared in consultation with DECC;
 - (c) include details of how the air quality performance of the project would be monitored, providing for additional dust deposition monitoring in the vicinity of clusters of residences to the north and west of the site; and
 - (d) include a protocol for evaluating compliance with the relevant air quality criteria in this approval.

METEOROLOGICAL MONITORING

13. The Proponent shall ensure the project has a suitable meteorological station on the site or in the immediate vicinity that complies with the requirements in the *Approved Methods for Sampling of Air Pollutants in New South Wales* publication.

WATER

Water Supply

14. The Proponent shall ensure that it has sufficient water for all stages of the project, and if necessary, adjust the scale of operations to match its water supply.

Note: The Proponent is required to obtain necessary water licences for the project under the Water Act 1912 and/or Water Management Act 2000.

Discharges

15. The Proponent shall not discharge any water from the quarry or its associated operations except in accordance with an EPL.

Water Management and Monitoring

16. The Proponent shall prepare and implement a Water Management Plan for the project to the satisfaction of the Director-General. This plan shall:
- (a) be submitted to the Director-General within 3 months of the date of this approval;
 - (b) be prepared in consultation with DWE and DECC; and (c) include a:
 - Site Water Balance;
 - Erosion and Sediment Control Plan;
 - Surface Water Monitoring Program; and
 - Groundwater Monitoring Program.
17. The Site Water Balance shall:
- (a) include details of:
 - sources and security of water supply;
 - water use on site;
 - water management on site, including the location and capacity of water storages on site and the means of access;
 - off-site water transfers; and
 - reporting procedures; and
 - (b) investigate and describe measures to minimise water use by the project.
18. The Erosion and Sediment Control Plan shall:
- (a) be consistent with the requirements of *Managing Urban Stormwater: Soils and Construction, Volume 1, 4th Edition, 2004* (Landcom);
 - (b) identify activities that could cause soil erosion and generate sediment;
 - (c) describe measures to minimise soil erosion and the potential for the transport of sediment to downstream waters;
 - (d) describe the location, function, and capacity of erosion and sediment control structures;
 - (e) demonstrate that the design capacity of basins intended to collect storm runoff will not be compromised by storage of operational water; and
 - (f) describe what measures would be implemented to maintain (and if necessary decommission) the structures over time.
19. The Surface Water Monitoring Program shall include:
- (a) detailed baseline data on surface water flows and quality in downstream watercourses that could be affected by the project;
 - (b) surface water quality and stream health assessment criteria, including trigger levels for investigating any potentially adverse surface water impacts; and (c) a program to monitor:

- surface water flows, quality, and impacts on water users; • stream health; and
- channel stability.

20. The Groundwater Monitoring Program shall include:

- provision of additional monitoring bores around the periphery of the site;
- detailed baseline data on groundwater levels, flows and quality in the region, and particularly any groundwater bores, springs and seeps (including spring and seep fed dams) that may be affected by operations on site;
- groundwater assessment criteria, including trigger levels for investigating any potentially adverse groundwater impacts; (d) a program to monitor:
 - groundwater levels and quality in new and existing monitoring bores;
 - the impacts of the project on:
 - any groundwater bores, springs and seeps (including spring and seep fed farm dams) on privately-owned land; and
 - any groundwater dependent ecosystems; and
- a protocol for further groundwater modelling to confirm the limits to excavation depth across the site permitted in accordance with condition 9 of Schedule 2.

LANDSCAPE MANAGEMENT

Rehabilitation

21. The Proponent shall progressively rehabilitate the site to the satisfaction of the Director-General, in a manner that is generally consistent with the concept final landform (Strategy A or Strategy B) in the preferred project report (as reproduced in Appendix 7).

Offset Strategy

22. The Proponent shall implement the Offset Strategy described in the preferred project report, and summarised in Table 6 (shown conceptually on the plan in Appendix 5), to the satisfaction of the Director-General.

Area	Minimum Size (hectares)
On-Site Revegetation Area (SHTW)	7.9
On-Site Revegetation Area (Other Woodland)	4.1
Total	12

Table 6: Offset Strategy

23. Within 3 years of the date of this approval, the Proponent shall make suitable arrangements to provide appropriate long term security for the offset areas to the satisfaction of the Director-General.

Note: The Department acknowledges that the arrangements may provide for staged or delayed implementation, in accordance with the extraction in these areas.

Landscape Management Plan

24. The Proponent shall prepare and implement a Landscape Management Plan for the project to the satisfaction of the Director-General. This plan must:

- (a) be prepared in consultation with DECC by suitably qualified expert/s whose appointment/s have been approved by the Director-General;
- (b) be submitted to the Director-General for approval within 6 months of the date of this approval; and
- (c) include a:
 - Rehabilitation and Offset Management Plan; and
 - Quarry Closure Plan.

Rehabilitation and Offset Management Plan

25. The Rehabilitation and Offset Management Plan must include:

- (a) the rehabilitation objectives for the site, vegetation offsets and landscaping;
- (b) a description of the short, medium, and long term measures that would be implemented to:
 - rehabilitate the site;
 - implement the Offset Strategy; and
 - maintain and enhance existing site vegetation outside the disturbance area;
- (c) detailed performance and completion criteria for the site rehabilitation and implementation of the Offset Strategy;
- (d) a detailed description of the measures that would be implemented over the next 3 years, including the procedures to be implemented for:
 - progressively rehabilitating disturbed areas;
 - implementing vegetation offsets;
 - protecting vegetation and soil outside the disturbance areas;
 - rehabilitating creeks and drainage lines on the site to ensure no net loss of stream length and aquatic habitat;
 - undertaking pre-clearance surveys;
 - managing impacts on fauna;
 - landscaping the site to minimise visual impacts;
 - conserving and reusing topsoil;
 - collecting and propagating seed for rehabilitation works;
 - salvaging and reusing material from the site for habitat enhancement;
 - controlling weeds and feral pests;
 - controlling access; and
 - bushfire management;
- (e) a program to monitor the effectiveness of these measures, and progress against the performance and completion criteria;
- (f) a description of the potential risks to successful rehabilitation and/or revegetation, and a description of the contingency measures that would be implemented to mitigate these risks; and (g) details of who would be responsible for monitoring, reviewing, and implementing the plan.

Quarry Closure Plan

26. The Quarry Closure Plan must:

- (a) include provision for certification from a qualified geotechnical engineer that the final proposed landform is stable;
- (b) define the objectives and criteria for closure of the quarry;
- (c) investigate options for the future use of the site, including any final void;

- (d) describe the measures that would be implemented to minimise or manage the ongoing (post closure) environmental effects of the project; and
- (e) describe how the performance of these measures would be monitored over time.

Rehabilitation and Offset Bond

27. Within 3 months of the approval of the Landscape Management Plan, the Proponent shall lodge a rehabilitation and offset bond for the project with the Director-General. The sum of the bond shall be calculated at:

- (a) \$2.50/m² for the area of disturbance in each 3 year review period, including the offset areas; and
- (b) \$1.00/m² for the total area of land previously disturbed by the quarry, or as otherwise directed by the Director-General.

Notes:

- *If the rehabilitation and offsets are completed to the satisfaction of the Director-General, the DirectorGeneral will release the bond.*
- *If the rehabilitation and/or offsets are not completed to the satisfaction of the Director-General, the DirectorGeneral will call in all or part of the bond, and arrange for the satisfactory completion of the relevant works.*

ABORIGINAL HERITAGE

28. Should the Proponent discover material suspected of being Aboriginal relics or skeletal remains, work in that area shall cease and the Proponent shall advise DECC and proceed in accordance with DECC instructions.

TRAFFIC AND TRANSPORT

Materials Transport

29. The Proponent shall transport all excavated material between the extraction site and processing plant site, including processing residues, via slurry pipelines.

Note: When the slurry system is unusable by reason of breakdown or essential maintenance, extractive material may be transported by truck during the period of such breakdown or maintenance. The Proponent shall ensure that such periods are as brief as possible and shall advise the Council each day that truck transport is to be used.

Haulage Records

30. The Proponent shall record and maintain a log of the extraction quantities and traffic movement in and out of the site, available for inspection at the request of the Director-General or the Council.

Road Haulage

31. The Proponent shall ensure that:

- (a) all loaded vehicles entering or leaving the site are covered; and
- (b) all loaded vehicles leaving the site are cleaned of materials that may fall on the road, before they leave the site.

VISUAL

Visual Amenity

32. The Proponent shall minimise the visual impacts of the project to the satisfaction of the DirectorGeneral.

Lighting Emissions

33. The Proponent shall:

- (a) take all practicable measures to mitigate off-site lighting impacts from the project; and
- (b) ensure that all external lighting associated with the project complies with *Australian Standard AS4282 (INT) 1995 – Control of Obtrusive Effects of Outdoor Lighting*, to the satisfaction of the Director-General.

Advertising

34. The Proponent shall not erect or display any advertising structure(s) or signs on the site without the written approval of the Director-General.

Note: This does not include traffic management and safety or environmental signs.

WASTE MANAGEMENT

Waste Minimisation

35. The Proponent shall:

- (a) only import VENM to the site; and
- (b) minimise the amount of waste generated by the project to the satisfaction of the DirectorGeneral.

EMERGENCY AND HAZARDS MANAGEMENT

Dangerous Goods

36. The Proponent shall ensure that the storage, handling, and transport of dangerous goods are conducted in accordance with the relevant Australian Standards, particularly AS1940 and AS1596, and the *Dangerous Goods Code*.

Safety

37. The Proponent shall secure the project to ensure public safety to the satisfaction of the DirectorGeneral.

Bushfire Management

38. The Proponent shall:

- (a) ensure that the project is suitably equipped to respond to any fires on-site; and
- (b) assist the Rural Fire Service and emergency services as much as possible if there is a fire on site.

PRODUCTION DATA

39. The Proponent shall:

- (a) provide annual production data to the DPI using the standard form for that purpose; and (b) include a copy of this data in the AEMR.

SCHEDULE 4 ADDITIONAL PROCEDURES

NOTIFICATION OF LANDOWNERS

1. If the results of monitoring required in Schedule 3 identify that impacts generated by the project are greater than the relevant impact assessment criteria, then the Proponent shall notify the Director-General and the affected landowners and/or existing or future tenants accordingly, and provide quarterly monitoring results to each of these parties until the results show that the project is complying with the relevant criteria.

INDEPENDENT REVIEW

2. If a landowner of privately owned land considers that the operations of the quarry are exceeding the impact assessment criteria in Schedule 3, then he/she may ask the Proponent in writing for an independent review of the impacts of the project on his/her land.

If the Director-General is satisfied that an independent review is warranted, the Proponent shall within 3 months of the Director-General advising that an independent review is warranted:

- (a) consult with the landowner to determine his/her concerns;
 - (b) commission a suitably qualified, experienced and independent person, whose appointment has been approved by the Director-General, to conduct monitoring on the land, to determine whether the project is complying with the relevant criteria in Schedule 3, and identify the source(s) and scale of any impact on the land, and the project's contribution to this impact; and (c) give the Director-General and landowner a copy of the independent review.
3. If the independent review determines that the quarrying operations are complying with the relevant criteria in Schedule 3, then the Proponent may discontinue the independent review with the approval of the Director-General.
 4. If the independent review determines that the quarrying operations are not complying with the relevant criteria in Schedule 3, and that the quarry is primarily responsible for this non-compliance, then the Proponent shall:
 - (a) implement all reasonable and feasible measures, in consultation with the landowner, to ensure that the project complies with the relevant criteria; and

- (b) conduct further monitoring to determine whether these measures ensure compliance; or
- (c) secure a written agreement with the landowner to allow exceedances of the relevant criteria in Schedule 3, to the satisfaction of the Director-General.

If the additional monitoring referred to above subsequently determines that the quarrying operations are complying with the relevant criteria in Schedule 3, then the Proponent may discontinue the independent review with the approval of the Director-General.

If the Proponent is unable to finalise an agreement with the landowner, then the Proponent or landowner may refer the matter to the Director-General for resolution.

If the matter cannot be resolved within 21 days, the Director-General shall refer the matter to an Independent Dispute Resolution Process (see Appendix 8).

5. If the landowner disputes the results of the independent review, either the Proponent or the landowner may refer the matter to the Director-General for resolution.

If the matter cannot be resolved within 21 days, the Director-General shall refer the matter to an Independent Dispute Resolution Process (see Appendix 8).

SCHEDULE 5 ENVIRONMENTAL MANAGEMENT, MONITORING, REPORTING & AUDITING

ENVIRONMENTAL MANAGEMENT STRATEGY

1. The Proponent shall prepare and implement an Environmental Management Strategy for the project to the satisfaction of the Director-General. This strategy shall be submitted to the Director-General within 3 months of the date of this approval, and;
 - (a) provide the strategic context for environmental management of the project;
 - (b) identify the statutory requirements that apply to the project;
 - (c) describe in general how the environmental performance of the project would be monitored and managed;
 - (d) describe the procedures that would be implemented to:
 - keep the local community and relevant agencies informed about the construction, operation and environmental performance of the project;
 - receive, handle, respond to, and record complaints;
 - resolve any disputes that may arise during the life of the project;
 - respond to any non-compliance;
 - manage cumulative impacts; and
 - respond to emergencies; and
 - (e) describe the role, responsibility, authority, and accountability of the key personnel involved in the environmental management of the project.

ENVIRONMENTAL MONITORING PROGRAM

2. The Proponent shall prepare an Environmental Monitoring Program for the project to the satisfaction of the Director-General. This program shall be submitted to the Director-General concurrently with the submission of the various monitoring programs and consolidate the various monitoring requirements in Schedule 3 of this approval into a single document.

REPORTING

Incident Reporting

3. Within 24 hours of detecting an exceedance of the limits/performance criteria in this approval or the occurrence of an incident that causes (or may cause) harm to the environment, the Proponent shall notify the Department and other relevant agencies of the exceedance/incident.
4. Within 6 days of notifying the Department and other relevant agencies of an exceedance/incident, the Proponent shall provide the Department and these agencies with a written report that:
 - (a) describes the date, time, and nature of the exceedance/incident;
 - (b) identifies the cause (or likely cause) of the exceedance/incident;
 - (c) describes what action has been taken to date; and
 - (d) describes the proposed measures to address the exceedance/incident.

Annual Reporting

5. Within 12 months of the date of this approval, and annually thereafter, the Proponent shall submit an AEMR to the Director-General, relevant agencies and CCC. This report shall:
 - (a) identify the standards and performance measures that apply to the project;
 - (b) describe the works that will be carried out in the next 12 months;
 - (c) include a summary of the complaints received during the past year, and compare this to the complaints received in previous years;
 - (d) include a summary of the monitoring results for the project during the past year; (e) include an analysis of these monitoring results against the relevant:
 - impact assessment criteria/limits;
 - monitoring results from previous years; and
 - predictions in the EA;
 - (f) identify any trends in the monitoring results over the life of the project;
 - (g) identify any non-compliance during the previous year; and
 - (h) describe what actions were, or are being, taken to ensure compliance.

INDEPENDENT ENVIRONMENTAL AUDIT

6. Within 12 months of the date of this approval, and every 3 years thereafter, unless the Director-General directs otherwise, the Proponent shall commission and pay the full cost of an Independent Environmental Audit of the project. This audit shall:
 - (a) be conducted by a suitably qualified, experienced, and independent person(s) whose appointment has been approved by the Director-General;
 - (b) include consultation with the relevant agencies;

- (c) assess the environmental performance of the project, and its effects on the surrounding environment;
- (d) assess whether the project is complying with the relevant standards, performance measures and statutory requirements; and
- (e) review the adequacy of any strategy/plan/program required under this approval, and, if necessary, recommend measures or actions to improve the environmental performance of the project, and/or any strategy/plan/program required under this approval.

Note: The person(s) conducting the audit should have expertise in flora and fauna assessment, hydrogeology and quarry rehabilitation.

7. Within 6 weeks of completion of each Independent Environmental Audit, the Proponent shall submit a copy of the audit report to the Director-General, with a response to any of the recommendations in the audit report.
8. Within 3 months of submitting a copy of the audit report to the Director-General, the Proponent shall review and if necessary revise:
 - (a) each of the environmental management and monitoring strategies/plans/programs in Schedules 3 and 5; and
 - (b) the sum of the Vegetation Offset Bond (see Schedule 3). This review shall consider:
 - the effects of inflation;
 - any changes to the total area of disturbance; and
 - the performance of the vegetation offsets against the completion criteria of the Rehabilitation and Vegetation Offset Management Plan,

to the satisfaction of the Director-General

COMMUNITY CONSULTATIVE COMMITTEE

9. The Proponent shall establish a Community Consultative Committee (CCC) for the project to the satisfaction of the Director-General, in general accordance with the Department's *Guideline for Establishing and Operating Community Consultative Committees for Mining Projects*.

Note: The Proponent may continue the operation of the Liaison and Review Committee established under condition 6.7 of the development consent issued by the Land and Environment Court on 14 July 1998 to fulfil this condition.

ACCESS TO INFORMATION

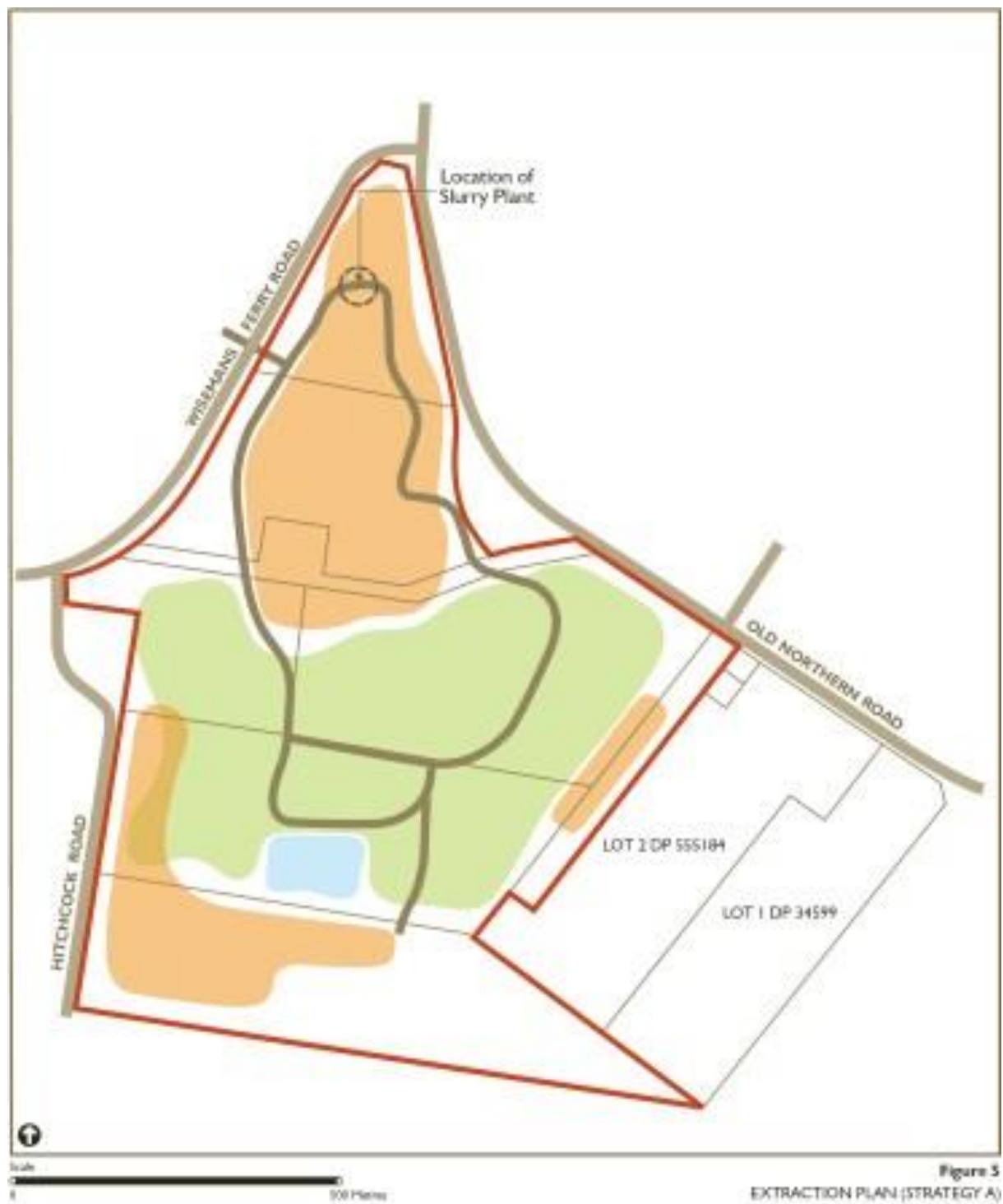
10. Within 1 month of the approval of any plan/strategy/program required under this approval (or any subsequent revision of these plans/strategies/programs), or the completion of the audits or AEMR required under this approval, the Proponent shall:
 - (a) provide a copy of the relevant document/s to the relevant agencies and to members of the general public upon request; and
 - (b) ensure that a copy of the relevant document/s is made publicly available on its website and at the Proponent's office.
11. During the project, the Proponent shall:
 - (a) make a summary of monitoring results required under this approval publicly available on its website and at the site office; and

- (b) update these results on a regular basis.

APPENDIX 1 SCHEDULE OF LAND

Extraction Area	<ul style="list-style-type: none">• Lots 1 & 2 DP 570966• Lots 1 & 2 DP 1063296• Lot 1 DP 1013943• Lot 2 DP 233818• Lot 1 DP 1091018• Lot 1 DP 223323• Lots 167 & 214 DP 752039
Processing Plant	<ul style="list-style-type: none">• Lot 198 DP 752025

APPENDIX 2 GENERAL LAYOUT OF PROJECT





APPENDIX 3 STATEMENT OF COMMITMENTS

Noise and Vibration

- Site activities will be managed so that any necessary high noise and vibration levels occur at times of least impact.
- All site activities will be undertaken incorporating noise attenuation measures such as restricting working hours for certain works required in the proximity of sensitive receptors.
- All equipment used on site will be certified in relation to noise performance.
- Panels and covers of silenced plant will be kept shut and plant and equipment switched off when not in use.
- All mechanical equipment will be silenced by the best practical means using current technology, prior to use. Noise suppression devices will be fitted according to manufacturer's instructions. Noise control kits will be fitted to noisy mobile equipment and shrouds provided around stationary equipment where necessary.
- All plant and equipment will be inspected regularly to ensure that it is well maintained to minimise noise emissions.
- The L_{10} noise level at the boundary of adjacent receivers where baseline data has been obtained will not normally exceed the background level by more than 5 dB(A).
- Compliance monitoring of noise levels will be undertaken and appropriate records of measurements kept.
- The local community will be informed of the level and duration of noise to be expected during specific activities and phases of development when necessary. Communication of concerns to the Environmental Manager will be invited.

Air Quality and Greenhouse Gas Emissions

- Ambient air quality monitoring will be conducted at identified sites.
- Dust suppression equipment will be fitted to all processing plant on the site. This will be regularly inspected and maintained in good working order at all times.
- Trafficable areas will be defined to prevent unnecessary vehicle movement into other parts of the site.
- All unsealed trafficable areas and working areas will be kept damp by spraying regularly with a water cart, water sprays or sprinklers to minimise dust emissions. Frequency of spraying to be determined based on weather conditions, soil erodibility and the observation of any visible dust.
- Speed controls will be applied to all unsealed areas (maximum speed of 20 km/h) and signposted accordingly.
- All semi-permanent stockpiles will be vegetated with suitable groundcover and regularly watered until the vegetation is well established.

- Work on any extraction activity producing dust will cease due to high winds if control cannot be achieved by watering or other means. Work will not resume until the wind velocity decreases and any dust generation can be controlled by normal means.
- All loaded trucks leaving the central processing plant on Lot 198 DP 752025 will have their payloads fully covered by a suitable material to prevent spillage.
- No fires will be permitted on-site without a permit.
- A mechanical road sweeping unit and water cart will be maintained for use as required to keep all roads including the intersection of the haul road and Wisemans Ferry Road free from deposited material.
- Exhausts from all vehicles and plant/equipment will be inspected to ensure that they are maintained at an acceptable level.
- All vehicles will be regularly serviced to ensure that exhaust emissions comply with the regulations. Appropriate service records will be maintained.
- Any opportunities to minimise machinery use and ensure that all equipment used on the site is energy efficient will be identified.

Access and Traffic

- If the sand slurry plant and transport system is unusable due to breakdown or during maintenance periods, trucks will be used for the transport of extractive material on a temporary basis. This will cease once the system is operating satisfactorily.
- The number of laden vehicle movements will not exceed a combined total of two hundred per day via the intersection of the haulage road and Wisemans Ferry Road. This is the total of laden vehicle movements allowed for PF Formation's combined extractive industry operations in Baulkham Hills Shire.
- Operations involving the transportation of material on the site will only be undertaken between 07.00 and 18.00 hours, Monday to Saturday, except a maximum of 10 laden vehicles will be allowed to enter and leave the site between 06.00 and 07.00 hours, Monday to Saturday only. Vehicles will not be allowed to arrive at the site prior to 05.45 hours on any day.

Erosion and Sediment Control

- Soil and Water Management Plan will be reviewed and revised, if required.
- Temporary erosion and sedimentation control structures such as detention basins and catch drains will be constructed as appropriate to collect runoff from cleared land including extraction areas and access roads.
- Silt traps and erosion control fencing will be erected as appropriate along extraction area boundaries and drainage lines.
- Sediment basins with a minimum storage capacity of 400 m³ per hectare of catchment will be constructed. Spillway capacity and stability will be designed as follows: – life of less than 5

years, adopt the 20 year tc event; – life between 5 and 10 years, adopt the 50 year tc event; and – life greater than 10 years, adopt the 100 year tc event.

- Stormwater control measures will be assessed and routine inspections conducted to ensure that compliance with best practice guidelines and relevant legislation is achieved.
- Locations for topsoil and material stockpiles will be selected on level ground and away from drainage lines. Diversion drains and sediment filter fences will be installed up slope as appropriate.
- Training will be provided to operational personnel on the importance of erosion control measures and drivers informed of the damage that can be caused to the environment by heavy vehicles.
- Areas of exposed land will be kept to a minimum compatible with operational requirements.
- Exposed areas not in use will be stabilized with an appropriate cover crop and watered until well established.
- Erosion and sediment controls will be monitored regularly and immediately following a rainfall event. Monitoring will take place initially on a weekly basis, then monthly once operating correctly. Sediment will be cleared when the traps have collected 60% of the capacity of the basin or where sediment build-up is less than 300 mm below the spillway crest. Sediment will be removed to a location where further pollution to downslope lands and waterways will not occur.
- Maintenance of erosion and sediment controls will be undertaken when any deterioration is identified or when replacement is necessary.
- Stored stormwater will be reused for dust control and the watering of site vegetation.
- Soil stockpiles will be seeded where these are to remain unused for a period in excess of four weeks. The area will be watered until the vegetation is well established.

Water Management

- Maximum depth of extraction will be restricted to not less than two metres above the wet weather high groundwater level. (nominally 181 m AHD).
- The groundwater will not be breached or contaminated. In the event that either should occur, operations will cease in the affected area and the Department of Environment and Climate Change consulted to determine the basis on which extraction may recommence.
- Retention basins will be designed to accommodate the 100-year tc event. The minimum basin capacities are:
 - Northern catchment 10,000 m³
 - Southern catchment 38,000 m³

The volume of these basins can be varied depending on the extent of the area exposed for extraction within each catchment.

- All retention basins will be regularly inspected and an annual report prepared on their effectiveness.
- A minimum of two groundwater monitoring bores will be installed. One will be located within or near the extraction area and another at some location within the site beyond the area of any direct extraction influence. The location of these bores will meet the requirements of the Department of Environment and Conservation and Baulkham Hills Shire Council.

Flora and Fauna

- All areas which are not to be disturbed will be clearly marked.
- Topsoil will be separated and stored or use in rehabilitation works.
- An area of not less than 12 hectares will be identified, and indicated on the site survey. This will be identified as a revegetation area and access controlled.
- Seed will be collected from the existing woodland communities (Sydney Hinterland Transition Woodland), stored under controlled conditions, made available for future broadcasting and a suitable proportion propagated to provide tubestock for revegetation.
- Stored topsoil and that derived from suitable areas adjacent to the woodland communities will be spread over the defined revegetation area and seed broadcast over the site to augment the soil-borne native seed bank. Tube stock suitably protected against animal predation will also be used in appropriate locations.
- Access to bushland will be restricted to minimise the potential for damage. These areas will be marked and signs erected to ensure that this prohibition is made clear. The boundary of the site will be fenced to prevent external access.

Rehabilitation

- The Rehabilitation Plan will be reviewed and amended as necessary to reflect changing operational conditions. This will include a revised phasing plan and implementation programme.
- Setbacks to all roads and adjacent properties will be defined taking account of existing trees and other features. Programmes of mound construction and screen planting will be undertaken as required in the Rehabilitation Plan. All plant material used will reflect the species mix existing in the area.
- A staged seeding and planting programme will be undertaken as areas become available following completion of extraction and capping of sediment basins. This will be aimed at producing a dense plantation on the steeper slopes derived from the flora resources already established. The aim is to replicate as far as possible the mix and density of planting which is currently present.
- All suitable plant material will be used on the site as a seed and planting medium. Topsoil will be stored in appropriately marked low stockpiles for reuse in locations as close as possible to their source. Care will be taken to ensure that this does not become contaminated with the seeds of exotic species and weeds.

- The site will be rehabilitated in stages leaving areas exposed for as short a time as possible. This will be undertaken in conformity with the approved Rehabilitation Plan with maximum final batter grades of 4(H):1(V) on north and west facing slopes and 3(H):1(V) on those facing south and east. Final slopes will be as gentle as possible depending on the availability of fill material.
- All soil stockpiles and exposed areas will be seeded with an appropriate vegetation cover where no activity is to take place for more than four weeks.
- Revegetation of the site will be undertaken on the following basis:
 - as far as possible re-establish the Sydney Hinterland Transitional Woodland using seed and mulch collected from the area ;
 - rehabilitate other areas to native species with a light sowing of cereal and allowing natural regeneration;
 - rehabilitate the soil to achieve a full profile;
 - lime, fertilise and sow areas where improved grass cover is required; and
 - suitably turf surfaces expected to experience high surface flows leaving the site.
- A maintenance programme aimed at promoting and protecting the growth of the rehabilitated areas will be established.

Social Impact Management

- Material concerning activities at the site will be prepared and published on the company's website which will allow the community and others to be informed about current news on the site.
- Regular bi-annual meetings of community representatives will be established to discuss issues in relation to sand extraction on the site.
- A Complaints Register will be established incorporating date and time, type of communication, contact details of the complainant, nature of the complaint and response taken.

Heritage

- All work will cease in the area if an archaeological or heritage item is identified during extraction operations and the National Parks and Wildlife Service, the Deerubbin Aboriginal Land Council or the Heritage Office consulted to determine any appropriate course of action prior to recommencement of the work.
- Any additional survey work required for submittal of application to destroy artefact scatters located in the later stages of the development will be undertaken. Reasonable requirements of the National Parks and Wildlife Service (DECC), the Deerubbin Aboriginal Land Council and the Heritage Office arising out of any additional studies will be implemented.

Visual Amenity

- Peripheral bunds will be constructed within the established setbacks where necessary to screen extraction activities. These will be a minimum of three metres high with slopes ranging from 3(H):1(V) to 6(H):1(V) depending on the location using overburden stripped from the site.
- Screen planting works will be undertaken in the peripheral areas to an agreed specification using mulch to allow for native plant regeneration. This species mix will be reinforced using appropriate plantings at specified intervals.
- A tree planting programme will be undertaken within the ten metre buffer zones and in other defined parts of the site to establish a dense plantation using an appropriate mix of species reflecting that of the existing community.
- The final rehabilitated landform will be established in conformity with the Rehabilitation Plan.
- All temporary fencing will be removed when no longer required.
- Vegetation in areas suitable for agricultural/horticultural uses will be re-established.
- All site infrastructure including the slurry plant and its associated pipelines will be removed. Those areas affected by the plant will be restored and rehabilitated.
- All waste materials will be removed and disposed of in an appropriate manner.
- The final Rehabilitation Plan will be reviewed and proposals for future use of the site prepared.

Waste Management

- Waste handling areas will be clearly delineated.
- Specific areas for the collection of materials for reuse and recycling will be defined and clearly labelled.
- Cleared vegetation will be used within the landscape programme.
- All topsoil will be stored in stockpiles for later use in site rehabilitation.
- Bins or skips will be provided for the collection and storage of recyclable material and waste. General construction waste will be stored in a skip located at the workshop on Lot 198 DP752025. Waste food will be removed and stored in a vermin proof bin for collection by a waste contractor. Paper waste generated from site offices, plastics and glass will be collected separately for recycling.
- Hazardous wastes (including empty drums, rags, soil contaminated with oil) will be separated from nonhazardous wastes and managed in accordance with the relevant legislation.
- Liquid wastes (chemicals, oils and greases) will be temporarily stored in an appropriately bunded area and disposed of via a licensed contractor. Wash down water will be directed to an appropriate settlement basin if quality is acceptable.
- Copies of current licences of all waste removal contractors on site will be retained.
- All documentation relating to waste removal and disposal will be retained on file at the site. This documentation will include dockets for the removal and disposal of waste at a licensed facility.

- Waste material will be progressively separated and stockpiled in designated areas for collection. Adequately secure waste disposal areas to prevent access by wildlife.
- All waste licences will be reviewed and terms and conditions for compliance monitored.
- Any materials and waste remaining on the site following completion of extraction operations will be recycled or sent of disposal. This will be either recycled or disposed of in an appropriate manner.

Emergency Response

- All personnel on site during operations will be trained in appropriate procedures including site induction, materials handling and response procedures.
- Emergency response procedures will be developed and put in place. Appropriate individuals will be appointed as emergency services liaison officers.
- An emergency response table listing contact details of all relevant parties required in an environmental emergency will be prepared.
- A Register of Environmentally Hazardous Materials to be stored and used on site will be established.
- Appropriate safety and spill response equipment will be made available on site.
- All materials to be used and stored on site will be clearly labelled.
- Emergency response procedures will be reviewed and updated bi-annually.
- Appropriate safety and response equipment will be available at all times.

Hazard, Risk and Safety

- A licence to keep dangerous goods will be obtained from WorkCover NSW for all materials stored on site which require licensing.
- A Register of Hazardous Materials setting out details of quantities, storage and specific handling requirements for all relevant materials stored on site will be established.
- Material Safety Data Sheets for all hazardous materials stored on site will be obtained.
- Appropriate storage and secondary containment facilities for all hazardous materials stored on site will be provided. All bunded areas will be designed to contain at least 110% of the volume of materials stored within the area.
- A Safety Officer will be appointed for the development.
- All flammable material storage areas will be located at least ten metres from possible ignition sources.

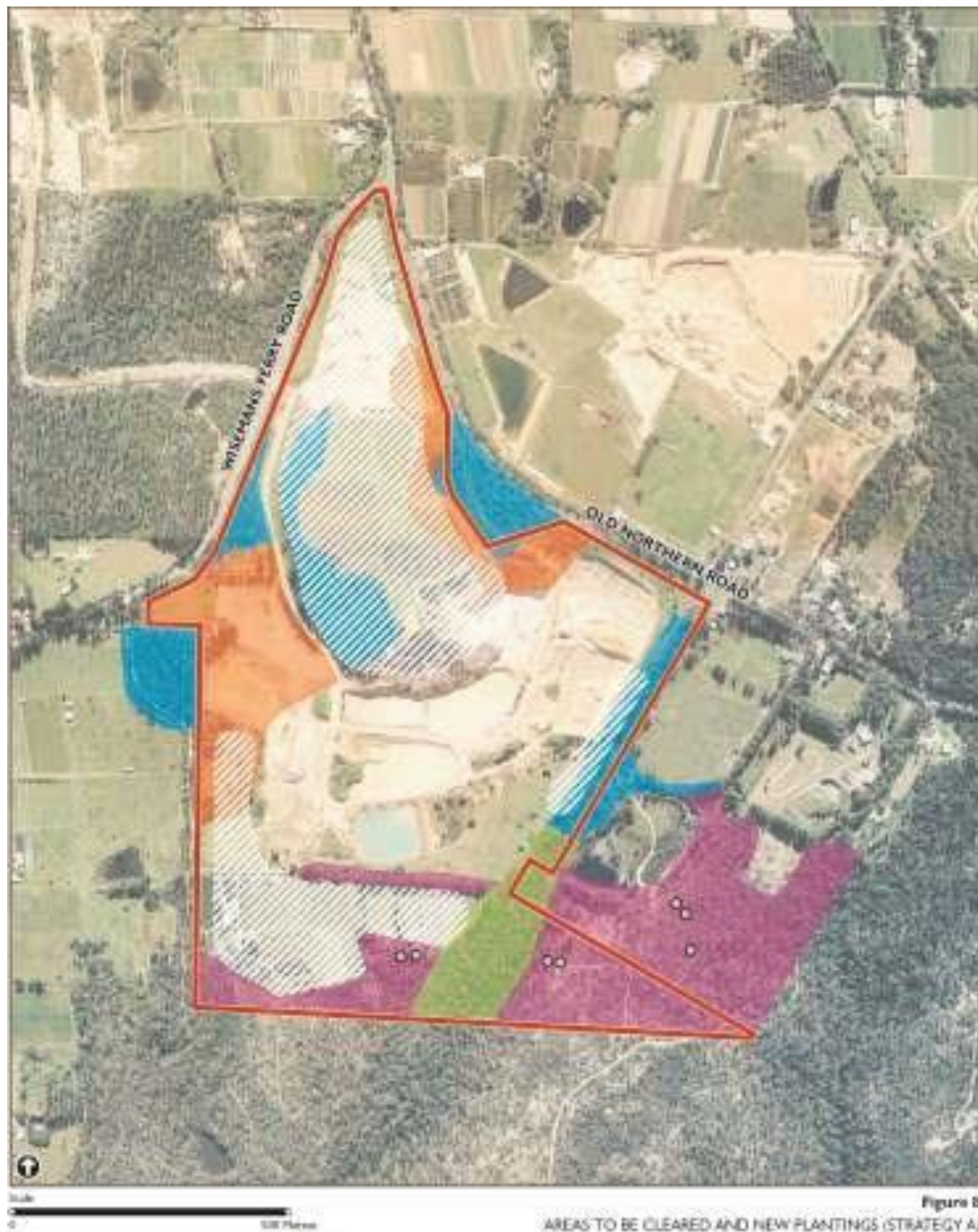
- Contents of all above ground storage areas will be clearly labelled.
- All hazardous and dangerous goods storage areas will be secured and appropriate signage displayed. All incompatible material will be segregated.
- All personnel will be trained in the handling and safety procedures required for the hazardous materials stored and used on site.
- An Emergency Response Plan will be developed and put in place.
- A mobile spill control kit containing appropriate absorbent materials, neutralising chemicals and other spill containment equipment will be provided.
- Personal protective equipment will be provided and personnel instructed in its use.
- Any spills beyond the bunded area will be cleaned up immediately and the contaminated material disposed of in an appropriate manner.
- The relevant authorities will be contacted in the event of a leak or spill and any instructions followed. Any contamination will be remediated to the satisfaction of the regulatory authorities.
- Any spills or hazardous wastes that cannot be recycled will be collected and disposal by a licensed waste contractor arranged. All records of waste removal on site will be retained.



Figure 4.2
NOISE MONITORING AND ASSESSMENT LOCATIONS

APPENDIX 4 NOISE ASSESSMENT LOCATIONS

APPENDIX 5 VEGETATION OFFSET PLAN



- Hitchcock Road site
- Areas for new plantings
- *Tetrastichus glandulosus*
- Sydney Sandstone Gully Forest
- Sydney Sandstone Ridgeline Woodland
- Sydney Hinterland Transition Woodland
- Areas to be cleared

Note: Sydney Hinterland Transition Woodland shown at time of photograph (2006).
Parts of this area can be cleared under the current consent.

APPENDIX 6 CRITERIA TO MONITOR SUCCESS OF REVEGETATION

Table 3-1 Criteria to monitor success of revegetation

Category	Criteria	1 year	5 years	15 years	Final condition of vegetation to be achieved
Native species	Native species diversity	20	25	40	48
	Percentage number per 400m ² quadrat				
	Average number of individuals per species per 400m ² quadrat	15	20	30	34.5 + 1.5t
	Native species cover	40	45	49.5	50
Weeds	% of vegetation cover in 400m ² quadrat	10	10	10	10
	% of vegetation cover in 400m ² quadrat	Controlled	Controlled	Controlled	Restricted
Vegetation structure	Vegetation structure	Canopy, shrub layer and groundcover well established. However, shrubs are sparse, generally consisting of low canopy and ground cover	Canopy, shrub layer and groundcover well established. Shrub layer beginning to develop	Well structured and includes canopy, shrub layer and ground cover	Well structured and includes canopy, shrub layer and ground cover
Canopy	Average canopy height (m)	4	8	12	12-16
	Native canopy cover (minimum % cover)	5	6	6	6
Shrub layer	(marked on a marked scale)	1	10	12	15
	Native shrub cover (minimum % cover)	10	10	18	22.5 + 1.75t
	(marked on a marked scale)	10	10	10	40
Ground cover	Average shrub layer height (m)	0.5	1	1	1.25
	Native ground cover (minimum % cover)	5	10	10	15 + 0.5t
	(marked on a marked scale) ¹	10	10	10	10

Category	Criteria	Target			Long-term condition of vegetation to be assessed
		3 years	10 years	15 years	
Ecosystem function	plant species	Vegetation structure beginning to develop	Woodland and Lands matured Habitat structure beginning to develop including groundcover such as leaf litter and fallen timber	Woodland to be matured Habitat structure beginning to develop including groundcover such as leaf litter and fallen timber	Provides minimal habitat for fauna however many woodland lands are very good structure. Habitat includes moderate levels of leaf litter and fallen timber
	Native representation indicating dispersal of seed into soil and/or presence of seed bank	Yes	Yes	Yes	Yes

There is a range of canopy species and a few may be higher quality due to canopy cover. The groundcover is sparse with dense ground cover. Growing mostly, sporadically and in the presence of scattered mature. Native tree canopy is moderate and including species such as ash, gum, and eucalyptus. However, the canopy is not dense and may be more open than the ground cover.

2. Multi-layered vegetation

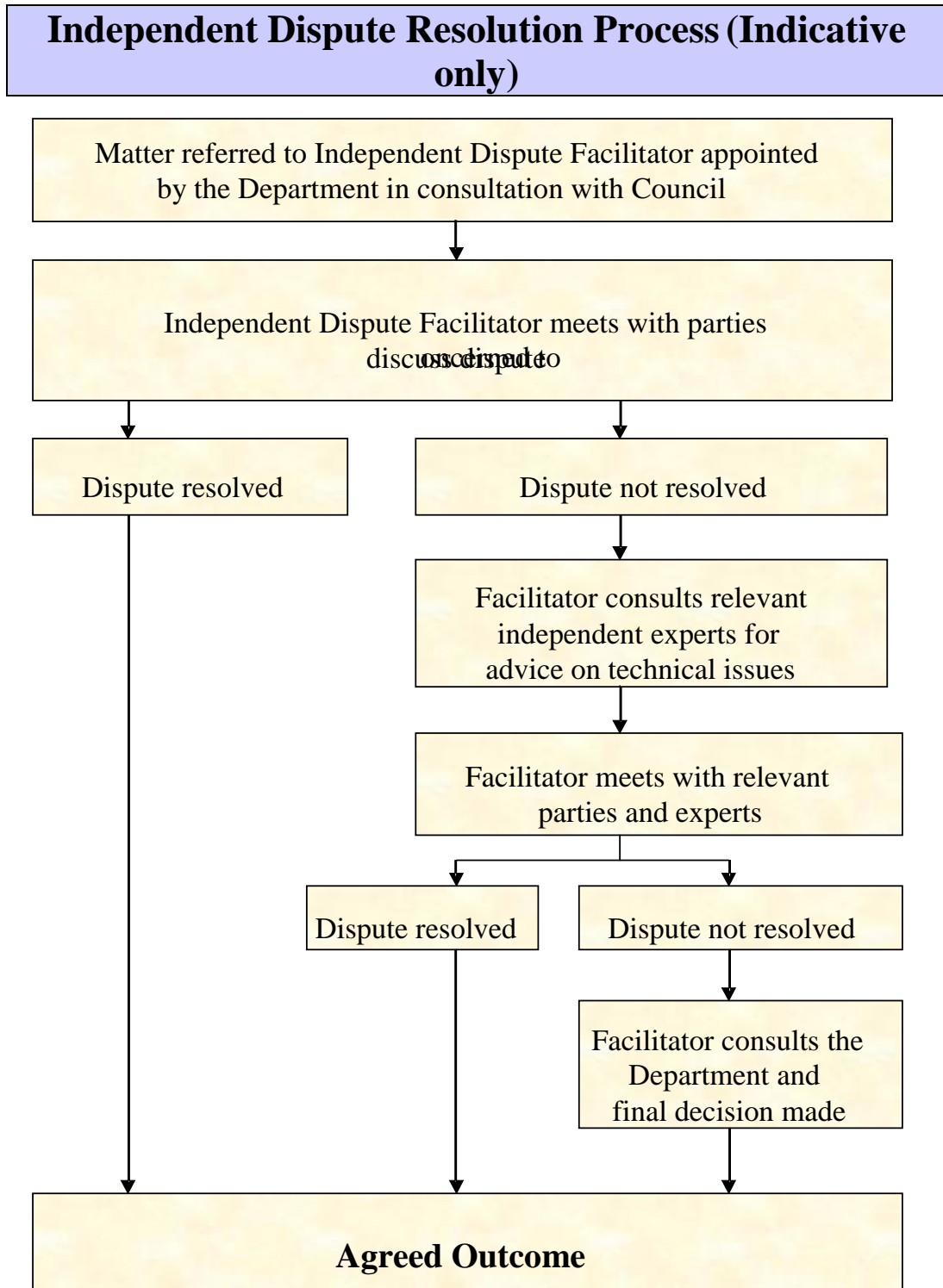
1. 100% canopy cover available
2. 100% canopy
3. 100%
4. 100%
5. 100%
6. 100%

APPENDIX 7 FINAL LANDFORM PLANS





APPENDIX 8 INDEPENDENT DISPUTE RESOLUTION PROCESS



ATTACHMENT 2

EPA LICENCE ANNUAL RETURN



Wed 18/11/2020 10:17 AM

econnect.epa@epa.nsw.gov.au

eConnect EPA: Annual Return submitted

To Josh

eConnect EPA Annual Return submitted



PF FORMATION PTY LTD Environment Protection Licence 3407 Annual Return due 28-11-2020

Dear Joshua Graham,

Thank you for submitting your annual return for the reporting period 30-09-2019 to 29-09-2020 for Environment Protection Licence 3407

The information provided in the annual return, in addition to records held by the NSW Environment Protection Authority will be used to calculate the annual licence administrative fee and any applicable load based licence fee. An invoice for any applicable fees will be issued shortly.

If you have any queries about your annual return, please contact EPA on (02) 9995 5700 or via email at peeo.licensing@epa.nsw.gov.au.

Your sincerely

Head of Regulatory and Compliance Support Unit

Environment Protection Authority

This email is intended for the addressee(s) named and may contain confidential and/or privileged information.

If you are not the intended recipient, please notify the sender and then delete it immediately.

Any views expressed in this email are those of the individual sender except where the sender expressly and with authority states them to be the views of the Environment Protection Authority.

PLEASE CONSIDER THE ENVIRONMENT BEFORE PRINTING THIS EMAIL

A. Statement of Compliance - Licence Details

ALL Licence holders must check that the Licence details in Section A are correct.

If there are changes to any of these details, you must advise Environment Protection Authority (EPA) and apply as soon as possible for a variation to your Licence or for a Licence transfer.

Licence variation and transfer application forms are available on the EPA website at: <http://www.epa.nsw.gov.au/licensing-and-regulation/licensing> or from regional offices of the EPA, or by contacting by telephone 02 9995 5700.

If you are applying to vary or transfer your Licence, you must still complete and submit this Annual Return.

A1. Licence holder

Licence number : 3407
 Licence holder : PF FORMATION PTY LTD
 Trading name (if applicable) :
 ABN : 30 003 178 318
 ACN : 003 178 318
 Reporting period : From: 30-9-2019 To: 29-9-2020

A2. Premises to which Licence Applies (if applicable)

Common name (if any) : ETRA PTY LTD
 Premises : WISEMANS FERRY ROAD MAROOTA 2756 NSW

A3. Activities to which Licence Applies

Extractive activities

A4. Other Activities (if applicable)

Concrete Works

A5. Fee-Based Activity Classifications

Note that the fee based activity classification is used to calculate the administrative fee.

Fee-based activity	Activity scale	Unit of measure
Land-based extractive activity	> 100,000.00 - 500,000.00	T annual capacity to extract, process or store

A6. Assessable Pollutants (if applicable)

Note that the identification of assessable pollutants is used to calculate the **load-based fee**.
The following assessable pollutants are identified for the fee-based activity classifications in the licence:

B. Monitoring and Complaints Summary

B1. Number of Pollution Complaints

Pollution Complaint Category	Complaints
Air	0
Water	0
Noise	0
Waste	0
Other	0
Total complaints recorded by the licensee during the reporting period	0

B2. Concentration Monitoring Summary

For each concentration monitoring point identified in your licence, details are displayed below. If concentration monitoring is not required by your licence, **no data** will appear below.
If data was provided from an uploaded file, the file name will be displayed below instead of any data.
Note that this does not exclude the need to conduct appropriate concentration monitoring of assessable pollutants as required by load-based licensing (if applicable).

Monitoring Point 1

Dust monitoring, Dust gauge labelled "1- School" on the Map faxed to the EPA on 5 August 2002

Pollutant	Unit of measure	No. of samples required	No. of samples collected and analysed	Lowest sample value	Mean of sample	Highest sample value
Particulates - Deposited Matter	grams per square metre per month	12	12	0.46	2.01	7.12

Monitoring Point 2

Dust monitoring, Dust gauge labelled 2 - intersection of Hitchcock and Wisemans Ferry Road

Pollutant	Unit of measure	No. of samples required	No. of samples collected and analysed	Lowest sample value	Mean of sample	Highest sample value
Particulates - Deposited Matter	grams per square metre per month	12	12	0.32	2.63	10.66

Monitoring Point 3

Dust monitoring, Dust gauge labelled as "Jurds Paddock - 3 Por168" on the map faxed to the EPA on 5 August 2002

Pollutant	Unit of measure	No. of samples required	No. of samples collected and analysed	Lowest sample value	Mean of sample	Highest sample value
Particulates - Deposited Matter	grams per square metre per month	12	12	1.00	3.12	9.86

B3. Volume or Mass Monitoring Summary

For each volume or mass monitoring point identified in your licence, details are displayed below. If volume or mass monitoring is not required by your licence, **no data** will appear below.
If data was provided from an uploaded file, the file name will be displayed below instead of any data.
Note that this does not exclude the need to conduct appropriate volume or mass monitoring of assessable pollutants are required by load-based licensing (if applicable).

C. Statement of Compliance - Licence Conditions

C1. Compliance with Licence Conditions

Were all conditions of the licence complied with (including monitoring and reporting requirements)?	Yes
---	-----

D. Statement of Compliance - Load Based Fee Calculation

If you are not required to monitor assessable pollutants by your licence, **no data** will appear below.

If assessable pollutants have been identified on your licence, the following worksheets for each assessable pollutant will determine your load based fee for the licence fee period to which this Annual Return relates.

Loads of assessable pollutants must be calculated using any of the methods provided in EPA's Load Calculation Protocol for the relevant activity. A Load Calculation Protocol would have been already sent to you with your licence. If you require additional copies, you can download the Protocol from the EPA's website or you can contact us on telephone 02 9995 5700.

You are required to keep all records used to calculate licence fees for four years after the licence fee was paid or became payable, whichever is the later date.

E. Statement of Compliance - Requirement to Prepare PIRMP

Have you prepared a Pollution Incident Response Management Plan (PIRMP) as required under section 153A of the Protection of the Environment Operations (POEO) Act 1997?		Yes
Is the PIRMP available at the premises?		Yes
Is the PIRMP available in a prominent position on a publicly accessible website?		Yes
Address of the web page where the PIRMP can be accessed ▼		
www.pfformation.com.au		
Has the PIRMP been tested?		Yes
The PIRMP was last tested on	28-4-2020	
Has the PIRMP been updated?		Yes
The PIRMP was last updated on	28-4-2020	
Number of times the PIRMP was activated in this reporting period?		0
The PIRMP was activated on		

F. Statement of Compliance - Requirement to Publish Pollution Monitoring Data

Are there any conditions attached to your licence that require pollution monitoring to be undertaken as required under section 66(6) of the Protection of the Environment Operations (POEO) Act 1997?		Yes
Do you operate a website?		Yes
Is the pollution monitoring data published on your website in accordance with the EPA's written requirements for publishing pollution monitoring data?		Yes
Address of the web page where the pollution monitoring data can be accessed ▼		
www.pfformation.com.au		

G. Statement of Compliance - Environment Management System and Practices

Do you have an ISO 14001 certified Environmental Management System (EMS) OR any other system that EPA considers is equivalent to the accountability, procedures, documentation and record keeping requirements of an ISO 14001 certified EMS?	No
Have you conducted an assessment of your activities and operations to identify the aspects that have a potential to cause environmental impacts and implemented operational controls to address these aspects?	Yes
Have you established and implemented an operational maintenance program, including preventative maintenance?	Yes
Do you keep records of regular inspections and maintenance of plant and equipment?	Yes
Do you conduct regular (at least yearly) environmental audits at the premises that are conducted by a competent and independent person?	Yes
Have you undertaken an independent environmental audit covering documented environmental practices, procedures and systems in place during the annual return period?	Yes
Have you established and implemented an environmental improvement or management plan?	Yes
Do you train staff in environmental issues that may arise from your activities and operations at the premises and keep records of this?	Yes

H. Signature and Certification

This Annual Return may only be signed by person(s) with legal authority to sign it as set out in following categories: an Individual, a Company, a Public authority or a Local council.

It is an offence under section 66 of the Protection of the Environment Operations Act 1997 to supply any information in this form that is false or misleading in a material respect, or to certify a statement that is false or misleading in a material respect. There is a maximum penalty of \$250,000 for a corporation and \$120,000 for an individual.

I/We

- declare that the information in the Monitoring and Complaints Summary in Section B of this Annual Return application is correct and not false or misleading in a material respect, and
- certify that the information in the Statement and Compliance in sections A, C, D, E, F, G and H and any other pages attached to Section C is correct and not false or misleading in a material respect.

Signed by: Director

Name	Joshua Graham
Position	Director
Email Address	josh@pfformation.com.au
Phone Number	02 4566 8257

Signed by: Director	
Name	Luke Graham
Position	Director
Email Address	luke@pfformation.com.au
Phone Number	02 4566 8314

Signature		Signature	
Name		Name	
Position		Position	
Date	/ /	Date	/ /
Declaration <p>I declare that the information in the Monitoring and Complaints Summary in section B of this Annual Return is correct and not false or misleading in a material respect, and</p> <p>I certify that the information in the Statement of Compliance in section A,C,D,E,F and G and any pages attached to Section C is correct and not false or misleading in a material respect.</p>		Declaration <p>I declare that the information in the Monitoring and Complaints Summary in section B of this Annual Return is correct and not false or misleading in a material respect, and</p> <p>I certify that the information in the Statement of Compliance in section A,C,D,E,F and G and any pages attached to Section C is correct and not false or misleading in a material respect.</p>	

ATTACHMENT 3

VARIATION TO LICENCE NO. 3407

Licence Variation

Licence - 3407



PF FORMATION PTY LTD
ABN 30 003 178 318 ACN 003 178 318
1774 WISEMANS FERRY ROAD
MAROOTA NSW 2756

Attention: Josh Graham

Notice Number 1608406
File Number EF18/45413
Date 15-May-2021

NOTICE OF VARIATION OF LICENCE NO. 3407

BACKGROUND

- A. PF FORMATION PTY LTD ("the licensee") is the holder of Environment Protection Licence No. 3407 ("the licence") issued under the *Protection of the Environment Operations Act 1997* ("the Act"). The licence authorises the carrying out of activities at 1774 WISEMANS FERRY ROAD, MAROOTA, NSW, 2756 ("the premises").
- B. On 21 April 2021, in response to the licence review, the licensee advised that the premises name on the licence should be changed from Etra Pty Ltd to PF Formation Pty Ltd.
- C. On 26 April 2021, the licensee further advised that three listed Lot/DPs on the licence could be removed, as they do not form part of the licensed premises.
- D. This variation was instigated by the EPA as an outcome of the 2021 Licence Review.
- E. The EPA has considered matters under section 45 of the Act in issuing this licence variation including but not limited to:
 - any environmental impacts associated with the proposed variation;
 - taken into account the objective of the Act to protect the environment, reduce the risks to human health and prevent the degradation of the environment and improve the efficiency of administration of
 - the environment protection legislation.

VARIATION OF LICENCE NO. 3407

1. By this notice the EPA varies licence No. 3407. The attached licence document contains all variations that are made to the licence by this notice.
2. The following variations have been made to the licence:

Licence Variation



- Condition A2.1 Premises Details updated:
from: Etra Pty Ltd
to: PF Formation Pty Ltd; and

The following Lot and DP's were removed:

- Lot 1 DP 588936;
 - Lot 2 DP 703821; and
 - Lot 1 DP 595538.
- Condition A2.2 - Updated Map to reflect amended Lot and DP's.

A handwritten signature in dark ink, appearing to read 'Ruth Oowler'.

RUTH OWLER
A/Unit Head
Regulatory Operations Metro West
Environment Protection Authority
(by Delegation)

INFORMATION ABOUT THIS NOTICE

- This notice is issued under section 58(5) of the Act.
- Details provided in this notice, along with an updated version of the licence, will be available on the EPA's Public Register (<http://www.epa.nsw.gov.au/prpoeo/index.htm>) in accordance with section 308 of the Act.

Appeals against this decision

- You can appeal to the Land and Environment Court against this decision. The deadline for lodging the appeal is 21 days after you were given notice of this decision.

When this notice begins to operate

- The variations to the licence specified in this notice begin to operate immediately from the date of this notice, unless another date is specified in this notice.
- If an appeal is made against this decision to vary the licence and the Land and Environment Court directs that the decision is stayed the decision does not operate until the stay ceases to have effect or

Licence Variation



the Land and Environment Court confirms the decision or the appeal is withdrawn (whichever occurs first).

Licence Variation Summary



Licence - 3407

This Summary serves merely to highlight changes made to areas of this licence. Changes made to tables within the licence are indicated using underline (for additions) and Strikethrough (for deletions). While changes to conditions are indicated under subheadings such as 'New condition', 'Old condition', 'Replaced by', and 'Removed condition'.

The attached licence document contains all the changes made to this licence by the attached variation notice.

1 Administrative Conditions

Premises or plant to which this licence applies

PF FORMATION PTY LTD

1774 WISEMANS FERRY ROAD

MAROOKA

NSW 2756

LOT 1 DP 34599, LOT 1 DP 223323, LOT 2 DP 233818, LOT 2 DP 555184, LOT 1 DP 570966, LOT 2 DP 570966, LOT 198 DP 752025, LOT 167 DP 752039, LOT 214 DP 752039, LOT 1 DP 1013943, LOT 1 DP 1063296, LOT 2 DP 1063296, LOT 1 DP 1091018

~~ETRA PTY LTD~~

~~WISEMANS FERRY ROAD~~

~~MAROOKA~~

~~NSW 2756~~

~~LOT 1 DP 34599, LOT 1 DP 223323, LOT 2 DP 233818, LOT 2 DP 555184, LOT 1 DP 570966, LOT 2 DP 570966, LOT 1 DP 588936, LOT 1 DP 595538, LOT 2 DP 703821, LOT 198 DP 752025, LOT 167 DP 752039, LOT 214 DP 752039, LOT 1 DP 1013943, LOT 1 DP 1063296, LOT 2 DP 1063296, LOT 1 DP 1091018~~



Environment Protection Licence

Licence - 3407

Licence Details

Number:	3407
Anniversary Date:	30-September

Licensee

PF FORMATION PTY LTD
1774 WISEMANS FERRY ROAD
MARROOTA NSW 2756

Premises

PF FORMATION PTY LTD
1774 WISEMANS FERRY ROAD
MARROOTA NSW 2756

Scheduled Activity

Extractive activities

Fee Based Activity

Land-based extractive activity

Scale

> 100000-500000 T annual capacity
to extract, process or store

Contact Us

NSW EPA
4 Parramatta Square
12 Darcy Street
PARRAMATTA NSW 2150
Phone: 131 555
Email: info@epa.nsw.gov.au

Locked Bag 5022
PARRAMATTA NSW 2124



Environment Protection Licence

Licence - 3407

INFORMATION ABOUT THIS LICENCE	4
Dictionary	4
Responsibilities of licensee	4
Variation of licence conditions	4
Duration of licence	4
Licence review	4
Fees and annual return to be sent to the EPA	4
Transfer of licence	5
Public register and access to monitoring data	5
1 ADMINISTRATIVE CONDITIONS	6
A1 What the licence authorises and regulates	6
A2 Premises or plant to which this licence applies	6
A3 Other activities	7
A4 Information supplied to the EPA	7
2 DISCHARGES TO AIR AND WATER AND APPLICATIONS TO LAND	7
P1 Location of monitoring/discharge points and areas	7
3 LIMIT CONDITIONS	8
L1 Pollution of waters	8
L2 Waste	8
L3 Noise limits	8
L4 Hours of operation	10
L5 Potentially offensive odour	10
4 OPERATING CONDITIONS	10
O1 Activities must be carried out in a competent manner	10
O2 Maintenance of plant and equipment	10
O3 Dust	11
O4 Other operating conditions	11
5 MONITORING AND RECORDING CONDITIONS	11
M1 Monitoring records	11
M2 Requirement to monitor concentration of pollutants discharged	11
M3 Testing methods - concentration limits	12
M4 Recording of pollution complaints	12
M5 Telephone complaints line	13
6 REPORTING CONDITIONS	13
R1 Annual return documents	13



Environment Protection Licence

Licence - 3407

R2	Notification of environmental harm	14
R3	Written report	14
7	GENERAL CONDITIONS	15
G1	Copy of licence kept at the premises or plant	15
DICTIONARY	16
	General Dictionary	16



Environment Protection Licence

Licence - 3407

Information about this licence

Dictionary

A definition of terms used in the licence can be found in the dictionary at the end of this licence.

Responsibilities of licensee

Separate to the requirements of this licence, general obligations of licensees are set out in the Protection of the Environment Operations Act 1997 ("the Act") and the Regulations made under the Act. These include obligations to:

- ensure persons associated with you comply with this licence, as set out in section 64 of the Act;
- control the pollution of waters and the pollution of air (see for example sections 120 - 132 of the Act);
- report incidents causing or threatening material environmental harm to the environment, as set out in Part 5.7 of the Act.

Variation of licence conditions

The licence holder can apply to vary the conditions of this licence. An application form for this purpose is available from the EPA.

The EPA may also vary the conditions of the licence at any time by written notice without an application being made.

Where a licence has been granted in relation to development which was assessed under the Environmental Planning and Assessment Act 1979 in accordance with the procedures applying to integrated development, the EPA may not impose conditions which are inconsistent with the development consent conditions until the licence is first reviewed under Part 3.6 of the Act.

Duration of licence

This licence will remain in force until the licence is surrendered by the licence holder or until it is suspended or revoked by the EPA or the Minister. A licence may only be surrendered with the written approval of the EPA.

Licence review

The Act requires that the EPA review your licence at least every 5 years after the issue of the licence, as set out in Part 3.6 and Schedule 5 of the Act. You will receive advance notice of the licence review.

Fees and annual return to be sent to the EPA

For each licence fee period you must pay:

- an administrative fee; and
- a load-based fee (if applicable).



Environment Protection Licence

Licence - 3407

The EPA publication "A Guide to Licensing" contains information about how to calculate your licence fees. The licence requires that an Annual Return, comprising a Statement of Compliance and a summary of any monitoring required by the licence (including the recording of complaints), be submitted to the EPA. The Annual Return must be submitted within 60 days after the end of each reporting period. See condition R1 regarding the Annual Return reporting requirements.

Usually the licence fee period is the same as the reporting period.

Transfer of licence

The licence holder can apply to transfer the licence to another person. An application form for this purpose is available from the EPA.

Public register and access to monitoring data

Part 9.5 of the Act requires the EPA to keep a public register of details and decisions of the EPA in relation to, for example:

- licence applications;
- licence conditions and variations;
- statements of compliance;
- load based licensing information; and
- load reduction agreements.

Under s320 of the Act application can be made to the EPA for access to monitoring data which has been submitted to the EPA by licensees.

This licence is issued to:

PF FORMATION PTY LTD
1774 WISEMANS FERRY ROAD
MARROOTA NSW 2756

subject to the conditions which follow.



Environment Protection Licence

Licence - 3407

1 Administrative Conditions

A1 What the licence authorises and regulates

A1.1 This licence authorises the carrying out of the scheduled activities listed below at the premises specified in A2. The activities are listed according to their scheduled activity classification, fee-based activity classification and the scale of the operation.

Unless otherwise further restricted by a condition of this licence, the scale at which the activity is carried out must not exceed the maximum scale specified in this condition.

Scheduled Activity	Fee Based Activity	Scale
Extractive activities	Land-based extractive activity	> 100000 - 500000 T annual capacity to extract, process or store

A2 Premises or plant to which this licence applies

A2.1 The licence applies to the following premises:

Premises Details
PF FORMATION PTY LTD
1774 WISEMANS FERRY ROAD
MARROOTA
NSW 2756
LOT 1 DP 34599, LOT 1 DP 223323, LOT 2 DP 233818, LOT 2 DP 555184, LOT 1 DP 570966, LOT 2 DP 570966, LOT 198 DP 752025, LOT 167 DP 752039, LOT 214 DP 752039, LOT 1 DP 1013943, LOT 1 DP 1063296, LOT 2 DP 1063296, LOT 1 DP 1091018

A2.2 The premises location is shown on the map below.

Environment Protection Licence

Licence - 3407



A3 Other activities

A3.1 This licence applies to all other activities carried on at the premises, including:

Ancillary Activity
Concrete Works

A4 Information supplied to the EPA

A4.1 Works and activities must be carried out in accordance with the proposal contained in the licence application, except as expressly provided by a condition of this licence.

In this condition the reference to "the licence application" includes a reference to:

- a) the applications for any licences (including former pollution control approvals) which this licence replaces under the Protection of the Environment Operations (Savings and Transitional) Regulation 1998; and
- b) the licence information form provided by the licensee to the EPA to assist the EPA in connection with the issuing of this licence.

2 Discharges to Air and Water and Applications to Land

P1 Location of monitoring/discharge points and areas

P1.1 The following points referred to in the table below are identified in this licence for the purposes of monitoring and/or the setting of limits for the emission of pollutants to the air from the point.

Air



Environment Protection Licence

Licence - 3407

EPA identification no.	Type of Monitoring Point	Type of Discharge Point	Location Description
1	Dust monitoring		Dust gauge labelled "1- School" on the Map faxed to the EPA on 5 August 2002
2	Dust monitoring		Dust gauge labelled 2 - intersection of Hitchcock and Wisemans Ferry Road
3	Dust monitoring		Dust gauge labelled as "Jurds Paddock - 3 Por168" on the map faxed to the EPA on 5 August 2002

- P1.2 The following utilisation areas referred to in the table below are identified in this licence for the purposes of the monitoring and/or the setting of limits for any application of solids or liquids to the utilisation area.

3 Limit Conditions

L1 Pollution of waters

- L1.1 Except as may be expressly provided in any other condition of this licence, the licensee must comply with section 120 of the Protection of the Environment Operations Act 1997.

L2 Waste

- L2.1 The licensee must not cause, permit or allow any waste generated outside the premises to be received at the premises for storage, treatment, processing, reprocessing or disposal or any waste generated at the premises to be disposed of at the premises, except as expressly permitted by the licence.
- L2.2 This condition only applies to the storage, treatment, processing, reprocessing or disposal of waste at the premises if those activities require an environment protection licence.

L3 Noise limits

- L3.1 Noise generated at the premises must not exceed the noise limits presented in the table below. Note that the noise limits represent the noise contribution from the activity on the premise.

Location	Day	Night	Night
	LAeq(15 minute)	LAeq(15 minute)	LA1(1 minute)
Maroota Public School	40	NA	NA
Pignataro	40	37	52
Tornatola	39	38	52

Note: The Locations are as described in the *Maroota Sand Extraction Project Noise Impact Assessment Report 10-3138-R1, 13 April 2005*, for Lot 198 DP 752025 Old Northern Road, by Richard Heggie Associates Pty Ltd.



Environment Protection Licence

Licence - 3407

L3.2 For the purposes of condition L2.1:

- a) Day is defined as the period from 7am to 6pm Monday to Saturday and 8am to 6pm Sundays and Public holidays.
- b) Evening is defined as the period 6pm to 10pm.
- c) Night is defined as the period from 10pm to 7am Monday to Saturday and 10pm to 8am Sundays and Public Holidays.

L3.3 Noise from the premises is to be measured at the most affected point or within the residential boundary or at the most affected point within 30m of the dwelling (rural situations) where the dwelling is more than 30m from the boundary to determine compliance with the noise LAeq,(15min) limits in condition L2.1.

Noise from the premises is to be measured at 1m from the dwelling façade to determine compliance with the LA1(1 minute) noise limits in condition L2.1.

Where it can be demonstrated that direct measurement of noise from the premises is impractical, the EPA may accept alternative means of determining compliance. See Chapter 11 of the NSW Industrial Noise Policy.

The modification factors presented in Section 4 of the NSW Industrial Noise Policy shall also be applied to the measured noise levels where applicable.

Definition

LAeq(15 minute) represents the equivalent continuous noise level- the level of noise equivalent to energy average of noise levels of the source when measured over a 15 minute period.

LA1(1 minute) represents sound pressure level that is exceeded for 1% of the time over a 1 minute measurement period.

Where A-weighting is an adjustment made to sound pressure level measurements to approximate the response of the human ear.

Note:

Noise measurement

For the purpose of noise measurements required for this condition, the LAeq(15 minute) noise level must be measured or computed at any point specified in L2.3 over a period of 15 minutes using "FAST" response on the sound level meter.

For the purpose of the noise criteria for this condition, 5dBA must be added to the measured level if the noise is substantially tonal or impulsive in character. The location or point of impact can be different for each development, for example, at the closest residential receiver or at the closest boundary of the development. Measurement locations can be:

- a) 1 metre from the facade of the residence for night time assessment.
- b) At the residential boundary.
- c) 30 metres from the residence (rural situations) where the boundary is more than 30 metres from residence.

L3.4

The noise emission limits identified in L2.1 apply for prevailing meteorological conditions (winds up to 3m/s at 10 metres above ground level), temperature inversion conditions of up to 3°C/100m and wind



Environment Protection Licence

Licence - 3407

speed up to 2m/s at 10 metres above the ground. Noise impacts that may be enhanced by temperature inversions must be addressed by:

- a) Documenting noise complaints received to identify any higher level of impacts or patterns of temperature inversions.
- b) Where levels of noise complaints indicate a higher level of impact then actions to quantify and ameliorate any enhanced impacts under temperature inversion conditions should be developed and implemented.

- L3.5 The proponent shall prepare and implement a Noise Management Plan (NMP). The NMP must include but need not be limited to:
- a) The primary objective of minimising noise emissions from the premises.
 - b) A system that allows for periodic assessment of Best Management Practice (BMP) and Best Available Technology Economically Achievable (BATEA) to minimise noise emissions at all times and to seek achieving noise contributions not exceeding the Project Specific Noise Levels at all receiver locations.
 - c) Measures to monitor noise performance and respond to complaints.

L4 Hours of operation

- L4.1 Activities covered by this licence must only be carried out between the hours of 0600 and 1800 Monday to Friday, and 0600 and 1800 Saturday, and at no time on Sundays and Public Holidays.

L5 Potentially offensive odour

- L5.1 The licensee must not cause or permit the emission of offensive odour beyond the boundary of the premises.

Note: Section 129 of the Protection of the Environment Operations Act 1997, provides that the licensee must not cause or permit the emission of any offensive odour from the premises but provides a defence if the emission is identified in the relevant environment protection licence as a potentially offensive odour and the odour was emitted in accordance with the conditions of a licence directed at minimising odour.

4 Operating Conditions

O1 Activities must be carried out in a competent manner

- O1.1 Licensed activities must be carried out in a competent manner.

This includes:

- a) the processing, handling, movement and storage of materials and substances used to carry out the activity; and
- b) the treatment, storage, processing, reprocessing, transport and disposal of waste generated by the activity.

O2 Maintenance of plant and equipment

- O2.1 All plant and equipment installed at the premises or used in connection with the licensed activity:



Environment Protection Licence

Licence - 3407

- a) must be maintained in a proper and efficient condition; and
- b) must be operated in a proper and efficient manner.

O3 Dust

- O3.1 The premises must be maintained in a condition which minimises or prevents the emission of dust from the premises.
- O3.2 All loaded trucks entering or leaving the premises must have their loads covered.

O4 Other operating conditions

- O4.1 The licensee must prevent any tracking of mud on to public roads by vehicles leaving the premises.

5 Monitoring and Recording Conditions

M1 Monitoring records

- M1.1 The results of any monitoring required to be conducted by this licence or a load calculation protocol must be recorded and retained as set out in this condition.
- M1.2 All records required to be kept by this licence must be:
 - a) in a legible form, or in a form that can readily be reduced to a legible form;
 - b) kept for at least 4 years after the monitoring or event to which they relate took place; and
 - c) produced in a legible form to any authorised officer of the EPA who asks to see them.
- M1.3 The following records must be kept in respect of any samples required to be collected for the purposes of this licence:
 - a) the date(s) on which the sample was taken;
 - b) the time(s) at which the sample was collected;
 - c) the point at which the sample was taken; and
 - d) the name of the person who collected the sample.

M2 Requirement to monitor concentration of pollutants discharged

- M2.1 For each monitoring/discharge point or utilisation area specified below (by a point number), the licensee must monitor (by sampling and obtaining results by analysis) the concentration of each pollutant specified in Column 1. The licensee must use the sampling method, units of measure, and sample at the frequency, specified opposite in the other columns:
- M2.2 Air Monitoring Requirements

POINT 1



Environment Protection Licence

Licence - 3407

Pollutant	Units of measure	Frequency	Sampling Method
Particulates - Deposited Matter	grams per square metre per month	Monthly	AM-19

POINT 2

Pollutant	Units of measure	Frequency	Sampling Method
Particulates - Deposited Matter	grams per square metre per month	Monthly	AM-19

POINT 3

Pollutant	Units of measure	Frequency	Sampling Method
Particulates - Deposited Matter	grams per square metre per month	Monthly	AM-19

M3 Testing methods - concentration limits

- M3.1 Monitoring for the concentration of a pollutant emitted to the air required to be conducted by this licence must be done in accordance with:
- any methodology which is required by or under the Act to be used for the testing of the concentration of the pollutant; or
 - if no such requirement is imposed by or under the Act, any methodology which a condition of this licence requires to be used for that testing; or
 - if no such requirement is imposed by or under the Act or by a condition of this licence, any methodology approved in writing by the EPA for the purposes of that testing prior to the testing taking place.

Note: The *Protection of the Environment Operations (Clean Air) Regulation 2010* requires testing for certain purposes to be conducted in accordance with test methods contained in the publication "Approved Methods for the Sampling and Analysis of Air Pollutants in NSW".

M4 Recording of pollution complaints

- M4.1 The licensee must keep a legible record of all complaints made to the licensee or any employee or agent of the licensee in relation to pollution arising from any activity to which this licence applies.
- M4.2 The record must include details of the following:
- the date and time of the complaint;
 - the method by which the complaint was made;
 - any personal details of the complainant which were provided by the complainant or, if no such details were provided, a note to that effect;
 - the nature of the complaint;
 - the action taken by the licensee in relation to the complaint, including any follow-up contact with the



Environment Protection Licence

Licence - 3407

- complainant; and
- f) if no action was taken by the licensee, the reasons why no action was taken.

M4.3 The record of a complaint must be kept for at least 4 years after the complaint was made.

M4.4 The record must be produced to any authorised officer of the EPA who asks to see them.

M5 Telephone complaints line

- M5.1 The licensee must operate during its operating hours a telephone complaints line for the purpose of receiving any complaints from members of the public in relation to activities conducted at the premises or by the vehicle or mobile plant, unless otherwise specified in the licence.
- M5.2 The licensee must notify the public of the complaints line telephone number and the fact that it is a complaints line so that the impacted community knows how to make a complaint.
- M5.3 The preceding two conditions do not apply until 3 months after: the date of the issue of this licence.

6 Reporting Conditions

R1 Annual return documents

R1.1 The licensee must complete and supply to the EPA an Annual Return in the approved form comprising:

- 1. a Statement of Compliance,
- 2. a Monitoring and Complaints Summary,
- 3. a Statement of Compliance - Licence Conditions,
- 4. a Statement of Compliance - Load based Fee,
- 5. a Statement of Compliance - Requirement to Prepare Pollution Incident Response Management Plan,
- 6. a Statement of Compliance - Requirement to Publish Pollution Monitoring Data; and
- 7. a Statement of Compliance - Environmental Management Systems and Practices.

At the end of each reporting period, the EPA will provide to the licensee notification that the Annual Return is due.

R1.2 An Annual Return must be prepared in respect of each reporting period, except as provided below.

- R1.3 Where this licence is transferred from the licensee to a new licensee:
 - a) the transferring licensee must prepare an Annual Return for the period commencing on the first day of the reporting period and ending on the date the application for the transfer of the licence to the new licensee is granted; and
 - b) the new licensee must prepare an Annual Return for the period commencing on the date the application for the transfer of the licence is granted and ending on the last day of the reporting period.

R1.4 Where this licence is surrendered by the licensee or revoked by the EPA or Minister, the licensee must prepare an Annual Return in respect of the period commencing on the first day of the reporting period and



Environment Protection Licence

Licence - 3407

ending on:

- a) in relation to the surrender of a licence - the date when notice in writing of approval of the surrender is given; or
- b) in relation to the revocation of the licence - the date from which notice revoking the licence operates.

- R1.5 The Annual Return for the reporting period must be supplied to the EPA via eConnect EPA or by registered post not later than 60 days after the end of each reporting period or in the case of a transferring licence not later than 60 days after the date the transfer was granted (the 'due date').
- R1.6 The licensee must retain a copy of the Annual Return supplied to the EPA for a period of at least 4 years after the Annual Return was due to be supplied to the EPA.
- R1.7 Within the Annual Return, the Statements of Compliance must be certified and the Monitoring and Complaints Summary must be signed by:
- a) the licence holder; or
 - b) by a person approved in writing by the EPA to sign on behalf of the licence holder.

Note: The term "reporting period" is defined in the dictionary at the end of this licence. Do not complete the Annual Return until after the end of the reporting period.

Note: An application to transfer a licence must be made in the approved form for this purpose.

R2 Notification of environmental harm

- R2.1 Notifications must be made by telephoning the Environment Line service on 131 555.
- R2.2 The licensee must provide written details of the notification to the EPA within 7 days of the date on which the incident occurred.

Note: The licensee or its employees must notify all relevant authorities of incidents causing or threatening material harm to the environment immediately after the person becomes aware of the incident in accordance with the requirements of Part 5.7 of the Act.

R3 Written report

- R3.1 Where an authorised officer of the EPA suspects on reasonable grounds that:
- a) where this licence applies to premises, an event has occurred at the premises; or
 - b) where this licence applies to vehicles or mobile plant, an event has occurred in connection with the carrying out of the activities authorised by this licence,
- and the event has caused, is causing or is likely to cause material harm to the environment (whether the harm occurs on or off premises to which the licence applies), the authorised officer may request a written report of the event.
- R3.2 The licensee must make all reasonable inquiries in relation to the event and supply the report to the EPA within such time as may be specified in the request.
- R3.3 The request may require a report which includes any or all of the following information:
- a) the cause, time and duration of the event;
 - b) the type, volume and concentration of every pollutant discharged as a result of the event;



Environment Protection Licence

Licence - 3407

- c) the name, address and business hours telephone number of employees or agents of the licensee, or a specified class of them, who witnessed the event;
- d) the name, address and business hours telephone number of every other person (of whom the licensee is aware) who witnessed the event, unless the licensee has been unable to obtain that information after making reasonable effort;
- e) action taken by the licensee in relation to the event, including any follow-up contact with any complainants;
- f) details of any measure taken or proposed to be taken to prevent or mitigate against a recurrence of such an event; and
- g) any other relevant matters.

R3.4 The EPA may make a written request for further details in relation to any of the above matters if it is not satisfied with the report provided by the licensee. The licensee must provide such further details to the EPA within the time specified in the request.

7 General Conditions

G1 Copy of licence kept at the premises or plant

- G1.1 A copy of this licence must be kept at the premises to which the licence applies.
- G1.2 The licence must be produced to any authorised officer of the EPA who asks to see it.
- G1.3 The licence must be available for inspection by any employee or agent of the licensee working at the premises.



Environment Protection Licence

Licence - 3407

Dictionary

General Dictionary

3DGM [in relation to a concentration limit]	Means the three day geometric mean, which is calculated by multiplying the results of the analysis of three samples collected on consecutive days and then taking the cubed root of that amount. Where one or more of the samples is zero or below the detection limit for the analysis, then 1 or the detection limit respectively should be used in place of those samples
Act	Means the Protection of the Environment Operations Act 1997
activity	Means a scheduled or non-scheduled activity within the meaning of the Protection of the Environment Operations Act 1997
actual load	Has the same meaning as in the Protection of the Environment Operations (General) Regulation 2009
AM	Together with a number, means an ambient air monitoring method of that number prescribed by the <i>Approved Methods for the Sampling and Analysis of Air Pollutants in New South Wales</i> .
AMG	Australian Map Grid
anniversary date	The anniversary date is the anniversary each year of the date of issue of the licence. In the case of a licence continued in force by the Protection of the Environment Operations Act 1997, the date of issue of the licence is the first anniversary of the date of issue or last renewal of the licence following the commencement of the Act.
annual return	Is defined in R1.1
Approved Methods Publication	Has the same meaning as in the Protection of the Environment Operations (General) Regulation 2009
assessable pollutants	Has the same meaning as in the Protection of the Environment Operations (General) Regulation 2009
BOD	Means biochemical oxygen demand
CEM	Together with a number, means a continuous emission monitoring method of that number prescribed by the <i>Approved Methods for the Sampling and Analysis of Air Pollutants in New South Wales</i> .
COD	Means chemical oxygen demand
composite sample	Unless otherwise specifically approved in writing by the EPA, a sample consisting of 24 individual samples collected at hourly intervals and each having an equivalent volume.
cond.	Means conductivity
environment	Has the same meaning as in the Protection of the Environment Operations Act 1997
environment protection legislation	Has the same meaning as in the Protection of the Environment Administration Act 1991
EPA	Means Environment Protection Authority of New South Wales.
fee-based activity classification	Means the numbered short descriptions in Schedule 1 of the Protection of the Environment Operations (General) Regulation 2009.
general solid waste (non-putrescible)	Has the same meaning as in Part 3 of Schedule 1 of the Protection of the Environment Operations Act 1997



Environment Protection Licence

Licence - 3407

flow weighted composite sample	Means a sample whose composites are sized in proportion to the flow at each composites time of collection.
general solid waste (putrescible)	Has the same meaning as in Part 3 of Schedule 1 of the Protection of the Environment Operations Act 1997
grab sample	Means a single sample taken at a point at a single time
hazardous waste	Has the same meaning as in Part 3 of Schedule 1 of the Protection of the Environment Operations Act 1997
licensee	Means the licence holder described at the front of this licence
load calculation protocol	Has the same meaning as in the Protection of the Environment Operations (General) Regulation 2009
local authority	Has the same meaning as in the Protection of the Environment Operations Act 1997
material harm	Has the same meaning as in section 147 Protection of the Environment Operations Act 1997
MBAS	Means methylene blue active substances
Minister	Means the Minister administering the Protection of the Environment Operations Act 1997
mobile plant	Has the same meaning as in Part 3 of Schedule 1 of the Protection of the Environment Operations Act 1997
motor vehicle	Has the same meaning as in the Protection of the Environment Operations Act 1997
O&G	Means oil and grease
percentile [in relation to a concentration limit of a sample]	Means that percentage [eg.50%] of the number of samples taken that must meet the concentration limit specified in the licence for that pollutant over a specified period of time. In this licence, the specified period of time is the Reporting Period unless otherwise stated in this licence.
plant	Includes all plant within the meaning of the Protection of the Environment Operations Act 1997 as well as motor vehicles.
pollution of waters [or water pollution]	Has the same meaning as in the Protection of the Environment Operations Act 1997
premises	Means the premises described in condition A2.1
public authority	Has the same meaning as in the Protection of the Environment Operations Act 1997
regional office	Means the relevant EPA office referred to in the Contacting the EPA document accompanying this licence
reporting period	For the purposes of this licence, the reporting period means the period of 12 months after the issue of the licence, and each subsequent period of 12 months. In the case of a licence continued in force by the Protection of the Environment Operations Act 1997, the date of issue of the licence is the first anniversary of the date of issue or last renewal of the licence following the commencement of the Act.
restricted solid waste	Has the same meaning as in Part 3 of Schedule 1 of the Protection of the Environment Operations Act 1997
scheduled activity	Means an activity listed in Schedule 1 of the Protection of the Environment Operations Act 1997
special waste	Has the same meaning as in Part 3 of Schedule 1 of the Protection of the Environment Operations Act 1997
TM	Together with a number, means a test method of that number prescribed by the <i>Approved Methods for the Sampling and Analysis of Air Pollutants in New South Wales</i> .



Environment Protection Licence

Licence - 3407

TSP	Means total suspended particles
TSS	Means total suspended solids
Type 1 substance	Means the elements antimony, arsenic, cadmium, lead or mercury or any compound containing one or more of those elements
Type 2 substance	Means the elements beryllium, chromium, cobalt, manganese, nickel, selenium, tin or vanadium or any compound containing one or more of those elements
utilisation area	Means any area shown as a utilisation area on a map submitted with the application for this licence
waste	Has the same meaning as in the Protection of the Environment Operations Act 1997
waste type	Means liquid, restricted solid waste, general solid waste (putrescible), general solid waste (non - putrescible), special waste or hazardous waste

Mr Nigel Sargent

Environment Protection Authority

(By Delegation)

Date of this edition: 18-November-1999



Environment Protection Licence

Licence - 3407

End Notes	
1	Licence varied by notice V/M Upgrade, issued on 06-Jul-2000, which came into effect on 06-Jul-2000.
2	Licence varied by notice 1007929, issued on 02-Jul-2001, which came into effect on 27-Jul-2001.
3	Licence varied by notice 1010310, issued on 23-Aug-2002, which came into effect on 17-Sep-2002.
4	Licence varied by notice 1024315, issued on 16-Jan-2003, which came into effect on 10-Feb-2003.
5	Licence varied by notice 1076205, issued on 29-Feb-2008, which came into effect on 29-Feb-2008.
6	Licence varied by Change to Schedule 1 , issued on 02-May-2008, which came into effect on 02-May-2008.
7	Condition A1.3 Not applicable varied by notice issued on <issue date> which came into effect on <effective date>
8	Licence varied by notice 1099065, issued on 18-May-2009, which came into effect on 18-May-2009.
9	Licence varied by notice 1111706, issued on 31-Mar-2010, which came into effect on 31-Mar-2010.
10	Licence varied by notice 1124599, issued on 08-Feb-2011, which came into effect on 08-Feb-2011.
11	Licence varied by notice 1527553 issued on 16-Feb-2015
12	Licence transferred through application 1571428 approved on 30-Oct-2018 , which came into effect on 30-Oct-2018

ATTACHMENT 4

DPIE Letter

Rehabilitation Inspection



Planning,
Industry &
Environment

Mr Joshua Graham

Managing Director

Hitchcock Road Sand Project

Via Email ONLY: josh@pfformation.com.au

29/07/2021

Dear Mr Graham

**Hitchcock Road (Trig Hill) Sand Extraction and Rehab Project (PA 06_0104)
REHABILITATION INSPECTION**

Thank you for your time in facilitating the Department of Planning, Industry and Environment's (the Department's) inspection of the Hitchcock Road (Trig Hill) Sand Extraction and Rehab Project on 2 June 2021 as part of our rehabilitation review of select quarries across NSW.

The review focussed on compliance with consent conditions and management plans relating to:

- Vegetation and landscape management
- Rehabilitation
- Land management and
- Visual impact management.

During the review and inspection, Department officers noted the following:

- Rehabilitation of the quarry is progressing in alignment with the Landscape Management Plan v01.2 dated December 2016. However, although the overall condition of the rehabilitated areas was observed to be good, weeds were also present.

As an outcome of the review, it is recommended that active weed control measures continue to be implemented throughout the year to reduce weed abundance to a level like that of the vegetation to be removed for ongoing excavation.

The Department requests an annual update on the status of rehabilitation in the site's Annual Environmental Management Report.

Should you need to discuss the above, please contact Michelle Larkin, Compliance Officer on 02 9995 6799 or email compliance@planning.nsw.gov.au

Yours sincerely



Heidi Watters

Team Leader

Compliance

Department of Planning, Industry & Environment

4 Parramatta Square, 12 Darcy Street, Parramatta 2150 | T 1300 305 695 | www.planning.nsw.gov.au

ATTACHMENT 5

MONTHLY ENVIRONMENTAL OPERATIONAL PROCEDURES CHECKLIST

PF FORMATION – ENVIRONMENTAL OPERATIONAL PROCEDURES

Hitchcock Road Sand Extraction and Rehabilitation Project, Maroota

The chapter, page number and strategy point number are references to the approved Environmental Strategy Appendix A – Environmental Operational Procedures.

CHAPTER Page No.	STRATEGY Point No.	MANAGEMENT CONTROLS	STATUS ✓ or ✗	COMPLAINTS RECEIVED	COMMENTS
<u>A2</u> 33-35	2.1	Noise Management	✓	Nil	
<u>A3</u> 36-39	3.1, 3.2	Air Quality Management	✓	Nil	Deposited dust results for July 2020 showed low levels at all locations.
<u>A4</u> 40-41	4.1	Access and Traffic	✓	Nil	Truck movements were not exceeded. Weighbridge records were reviewed.
<u>A5</u> 42-45	5.1, 5.2, 5.3	Erosion & Sediment Control	✓	Nil	
<u>A6</u> 46-49	6.1	Water Management	✓	Nil	
<u>A7</u> 50-54	7.1, 7.2	Rehabilitation & Vegetation Offset Management	✓	Nil	Rehabilitation work undertaken. Weed removal and habitat enhancement.
<u>A8</u> 55-56	8.1	Social Impact Management	✓	Nil	
<u>A9</u> 57-58	9.1	Heritage Management	✓	Nil	
<u>A10</u> 59-61	10.1	Visual Amenity Management	✓	Nil	
<u>A11</u> 62-64	11.1	Waste Management	✓	Nil	
<u>A12</u> 65-66	12.1	Emergency Response Management	✓	Nil	
<u>A13</u> 67-71	13.1, 13.2	Hazard, Risk and Safety Management	✓	Nil	
Completed by Environmental Contractor (South East Environmental)				Signed: <i>Melissa Mass</i>	Date: 31/7/2020

PF FORMATION – ENVIRONMENTAL OPERATIONAL PROCEDURES

Hitchcock Road Sand Extraction and Rehabilitation Project, Maroota

The chapter, page number and strategy point number are references to the approved Environmental Strategy Appendix A – Environmental Operational Procedures.

CHAPTER Page No.	STRATEGY Point No.	MANAGEMENT CONTROLS	STATUS ✓ ☐ ✗	COMPLAINTS RECEIVED	COMMENTS
<u>A2</u> 33-35	2.1	Noise Management	✓	Nil	
<u>A3</u> 36-39	3.1, 3.2	Air Quality Management	✓	Nil	Deposited dust results for August 2020 showed low levels at all locations.
<u>A4</u> 40-41	4.1	Access and Traffic	✓	Nil	Truck movements were not exceeded. Weighbridge records were reviewed.
<u>A5</u> 42-45	5.1, 5.2, 5.3	Erosion & Sediment Control	✓	Nil	
<u>A6</u> 46-49	6.1	Water Management	✓	Nil	
<u>A7</u> 50-54	7.1, 7.2	Rehabilitation & Vegetation Offset Management	✓	Nil	Rehabilitation work undertaken. Weed removal and habitat enhancement.
<u>A8</u> 55-56	8.1	Social Impact Management	✓	Nil	
<u>A9</u> 57-58	9.1	Heritage Management	✓	Nil	
<u>A10</u> 59-61	10.1	Visual Amenity Management	✓	Nil	
<u>A11</u> 62-64	11.1	Waste Management	✓	Nil	
<u>A12</u> 65-66	12.1	Emergency Response Management	✓	Nil	
<u>A13</u> 67-71	13.1, 13.2	Hazard, Risk and Safety Management	✓	Nil	
Completed by Environmental Contractor (South East Environmental)				Signed: <i>Melissa Mass</i>	Date: 31/8/2020

PF FORMATION – ENVIRONMENTAL OPERATIONAL PROCEDURES
Hitchcock Road Sand Extraction and Rehabilitation Project, Maroota

The chapter, page number and strategy point number are references to the approved Environmental Strategy Appendix A – Environmental Operational Procedures.

CHAPTER Page No.	STRATEGY Point No.	MANAGEMENT CONTROLS	STATUS ✓ or ✗	COMPLAINTS RECEIVED	COMMENTS
<u>A2</u> 33-35	2.1	Noise Management	✓	Nil	Independent contractor cutting sandstone from Lot 1 DP34599 made aware of noise management criteria
<u>A3</u> 36-39	3.1, 3.2	Air Quality Management	✓	Nil	Deposited dust results for September 2020 showed low levels at all locations.
<u>A4</u> 40-41	4.1	Access and Traffic	✓	Nil	Truck movements were not exceeded. Weighbridge records were reviewed.
<u>A5</u> 42-45	5.1, 5.2, 5.3	Erosion & Sediment Control	✓	Nil	
<u>A6</u> 46-49	6.1	Water Management	✓	Nil	
<u>A7</u> 50-54	7.1, 7.2	Rehabilitation & Vegetation Offset Management	✓	Nil	Rehabilitation work undertaken. Weed removal and habitat enhancement.
<u>A8</u> 55-56	8.1	Social Impact Management	✓	Nil	
<u>A9</u> 57-58	9.1	Heritage Management	✓	Nil	
<u>A10</u> 59-61	10.1	Visual Amenity Management	✓	Nil	
<u>A11</u> 62-64	11.1	Waste Management	✓	Nil	
<u>A12</u> 65-66	12.1	Emergency Response Management	✓	Nil	
<u>A13</u> 67-71	13.1, 13.2	Hazard, Risk and Safety Management	✓	Nil	
Completed by Environmental Contractor (South East Environmental)				Signed: <i>Melissa Mass</i>	Date: 30/9/2020

PF FORMATION – ENVIRONMENTAL OPERATIONAL PROCEDURES

Hitchcock Road Sand Extraction and Rehabilitation Project, Maroota

The chapter, page number and strategy point number are references to the approved Environmental Strategy Appendix A – Environmental Operational Procedures.

CHAPTER Page No.	STRATEGY Point No.	MANAGEMENT CONTROLS	STATUS ✓ or ✗	COMPLAINTS RECEIVED	COMMENTS
<u>A2</u> 33-35	2.1	Noise Management	✓	Nil	
<u>A3</u> 36-39	3.1, 3.2	Air Quality Management	✓	Nil	Deposited dust results for October 2020 showed low levels at all locations.
<u>A4</u> 40-41	4.1	Access and Traffic	✓	Nil	Truck movements were not exceeded. Weighbridge records were reviewed.
<u>A5</u> 42-45	5.1, 5.2, 5.3	Erosion & Sediment Control	✓	Nil	
<u>A6</u> 46-49	6.1	Water Management	✓	Nil	
<u>A7</u> 50-54	7.1, 7.2	Rehabilitation & Vegetation Offset Management	✓	Nil	Rehabilitation work undertaken. Weed removal and habitat enhancement.
<u>A8</u> 55-56	8.1	Social Impact Management	✓	Nil	
<u>A9</u> 57-58	9.1	Heritage Management	✓	Nil	
<u>A10</u> 59-61	10.1	Visual Amenity Management	✓	Nil	
<u>A11</u> 62-64	11.1	Waste Management	✓	Nil	
<u>A12</u> 65-66	12.1	Emergency Response Management	✓	Nil	
<u>A13</u> 67-71	13.1, 13.2	Hazard, Risk and Safety Management	✓	Nil	
Completed by Environmental Contractor (South East Environmental)				Signed: <i>Melissa Mass</i>	Date: 31/10/2020

PF FORMATION – ENVIRONMENTAL OPERATIONAL PROCEDURES

Hitchcock Road Sand Extraction and Rehabilitation Project, Maroota

The chapter, page number and strategy point number are references to the approved Environmental Strategy Appendix A – Environmental Operational Procedures.

CHAPTER Page No.	STRATEGY Point No.	MANAGEMENT CONTROLS	STATUS ✓ or ✗	COMPLAINTS RECEIVED	COMMENTS
<u>A2</u> 33-35	2.1	Noise Management	✓	Nil	
<u>A3</u> 36-39	3.1, 3.2	Air Quality Management	✓	Nil	Deposited dust results for November 2020 showed low levels at all locations.
<u>A4</u> 40-41	4.1	Access and Traffic	✓	Nil	Truck movements were not exceeded. Weighbridge records were reviewed.
<u>A5</u> 42-45	5.1, 5.2, 5.3	Erosion & Sediment Control	✓	Nil	
<u>A6</u> 46-49	6.1	Water Management	✓	Nil	
<u>A7</u> 50-54	7.1, 7.2	Rehabilitation & Vegetation Offset Management	✓	Nil	Rehabilitation work undertaken. Weed removal and habitat enhancement.
<u>A8</u> 55-56	8.1	Social Impact Management	✓	Nil	
<u>A9</u> 57-58	9.1	Heritage Management	✓	Nil	
<u>A10</u> 59-61	10.1	Visual Amenity Management	✓	Nil	
<u>A11</u> 62-64	11.1	Waste Management	✓	Nil	
<u>A12</u> 65-66	12.1	Emergency Response Management	✓	Nil	
<u>A13</u> 67-71	13.1, 13.2	Hazard, Risk and Safety Management	✓	Nil	
Completed by Environmental Contractor (South East Environmental)				Signed: <i>Melissa Mass</i>	Date: 30/11/2020

PF FORMATION – ENVIRONMENTAL OPERATIONAL PROCEDURES

Hitchcock Road Sand Extraction and Rehabilitation Project, Maroota

The chapter, page number and strategy point number are references to the approved Environmental Strategy Appendix A – Environmental Operational Procedures.

CHAPTER Page No.	STRATEGY Point No.	MANAGEMENT CONTROLS	STATUS ✓ ✗	COMPLAINTS RECEIVED	COMMENTS
<u>A2</u> 33-35	2.1	Noise Management	✓	Nil	
<u>A3</u> 36-39	3.1, 3.2	Air Quality Management	✓	Nil	Deposited dust results for December 2020 showed low levels at all locations.
<u>A4</u> 40-41	4.1	Access and Traffic	✓	Nil	Truck movements were not exceeded. Weighbridge records were reviewed.
<u>A5</u> 42-45	5.1, 5.2, 5.3	Erosion & Sediment Control	✓	Nil	
<u>A6</u> 46-49	6.1	Water Management	✓	Nil	
<u>A7</u> 50-54	7.1, 7.2	Rehabilitation & Vegetation Offset Management	✓	Nil	Rehabilitation work undertaken. Weed removal and habitat enhancement.
<u>A8</u> 55-56	8.1	Social Impact Management	✓	Nil	
<u>A9</u> 57-58	9.1	Heritage Management	✓	Nil	
<u>A10</u> 59-61	10.1	Visual Amenity Management	✓	Nil	
<u>A11</u> 62-64	11.1	Waste Management	✓	Nil	
<u>A12</u> 65-66	12.1	Emergency Response Management	✓	Nil	
<u>A13</u> 67-71	13.1, 13.2	Hazard, Risk and Safety Management	✓	Nil	
Completed by Environmental Contractor (South East Environmental)				Signed: <i>Melissa Mass</i>	Date: 31/12/2020

PF FORMATION – ENVIRONMENTAL OPERATIONAL PROCEDURES

Hitchcock Road Sand Extraction and Rehabilitation Project, Maroota

The chapter, page number and strategy point number are references to the approved Environmental Strategy Appendix A – Environmental Operational Procedures.

CHAPTER Page No.	STRATEGY Point No.	MANAGEMENT CONTROLS	STATUS ✓ or ✗	COMPLAINTS RECEIVED	COMMENTS
<u>A2</u> 33-35	2.1	Noise Management	✓	Nil	
<u>A3</u> 36-39	3.1, 3.2	Air Quality Management	✓	Nil	Deposited dust results for January 2021 showed low levels at all locations.
<u>A4</u> 40-41	4.1	Access and Traffic	✓	Nil	Truck movements were not exceeded. Weighbridge records were reviewed.
<u>A5</u> 42-45	5.1, 5.2, 5.3	Erosion & Sediment Control	✓	Nil	
<u>A6</u> 46-49	6.1	Water Management	✓	Nil	
<u>A7</u> 50-54	7.1, 7.2	Rehabilitation & Vegetation Offset Management	✓	Nil	Rehabilitation work undertaken. Weed removal and habitat enhancement.
<u>A8</u> 55-56	8.1	Social Impact Management	✓	Nil	
<u>A9</u> 57-58	9.1	Heritage Management	✓	Nil	
<u>A10</u> 59-61	10.1	Visual Amenity Management	✓	Nil	
<u>A11</u> 62-64	11.1	Waste Management	✓	Nil	
<u>A12</u> 65-66	12.1	Emergency Response Management	✓	Nil	
<u>A13</u> 67-71	13.1, 13.2	Hazard, Risk and Safety Management	✓	Nil	
Completed by Environmental Contractor (South East Environmental)				Signed: <i>Melissa Mass</i>	Date: 31/01/2021

PF FORMATION – ENVIRONMENTAL OPERATIONAL PROCEDURES

Hitchcock Road Sand Extraction and Rehabilitation Project, Maroota

The chapter, page number and strategy point number are references to the approved Environmental Strategy Appendix A – Environmental Operational Procedures.

CHAPTER Page No.	STRATEGY Point No.	MANAGEMENT CONTROLS	STATUS ✓ or ✗	COMPLAINTS RECEIVED	COMMENTS
<u>A2</u> 33-35	2.1	Noise Management	✓	Nil	
<u>A3</u> 36-39	3.1, 3.2	Air Quality Management	✓	Nil	Deposited dust results for February 2021 showed low levels at all locations.
<u>A4</u> 40-41	4.1	Access and Traffic	✓	Nil	Truck movements were not exceeded. Weighbridge records were reviewed.
<u>A5</u> 42-45	5.1, 5.2, 5.3	Erosion & Sediment Control	✓	Nil	
<u>A6</u> 46-49	6.1	Water Management	✓	Nil	
<u>A7</u> 50-54	7.1, 7.2	Rehabilitation & Vegetation Offset Management	✓	Nil	Rehabilitation work undertaken. Weed removal and habitat enhancement.
<u>A8</u> 55-56	8.1	Social Impact Management	✓	Nil	
<u>A9</u> 57-58	9.1	Heritage Management	✓	Nil	
<u>A10</u> 59-61	10.1	Visual Amenity Management	✓	Nil	
<u>A11</u> 62-64	11.1	Waste Management	✓	Nil	
<u>A12</u> 65-66	12.1	Emergency Response Management	✓	Nil	
<u>A13</u> 67-71	13.1, 13.2	Hazard, Risk and Safety Management	✓	Nil	
Completed by Environmental Contractor (South East Environmental)				Signed: <i>Melissa Mass</i>	Date: 28/02/2021

PF FORMATION – ENVIRONMENTAL OPERATIONAL PROCEDURES

Hitchcock Road Sand Extraction and Rehabilitation Project, Maroota

The chapter, page number and strategy point number are references to the approved Environmental Strategy Appendix A – Environmental Operational Procedures.

CHAPTER Page No.	STRATEGY Point No.	MANAGEMENT CONTROLS	STATUS ✓ or ✗	COMPLAINTS RECEIVED	COMMENTS
<u>A2</u> 33-35	2.1	Noise Management	✓	Nil	
<u>A3</u> 36-39	3.1, 3.2	Air Quality Management	✓	Nil	Deposited dust results for March 2021 showed low levels at all locations.
<u>A4</u> 40-41	4.1	Access and Traffic	✓	Nil	Truck movements were not exceeded. Weighbridge records were reviewed.
<u>A5</u> 42-45	5.1, 5.2, 5.3	Erosion & Sediment Control	✓	Nil	Significant rainfall event during March did not result in any sediment or erosion control remediation work. All drains and basins worked well.
<u>A6</u> 46-49	6.1	Water Management	✓	Nil	
<u>A7</u> 50-54	7.1, 7.2	Rehabilitation & Vegetation Offset Management	✓	Nil	Rehabilitation work undertaken. Weed removal and habitat enhancement.
<u>A8</u> 55-56	8.1	Social Impact Management	✓	Nil	
<u>A9</u> 57-58	9.1	Heritage Management	✓	Nil	
<u>A10</u> 59-61	10.1	Visual Amenity Management	✓	Nil	
<u>A11</u> 62-64	11.1	Waste Management	✓	Nil	
<u>A12</u> 65-66	12.1	Emergency Response Management	✓	Nil	
<u>A13</u> 67-71	13.1, 13.2	Hazard, Risk and Safety Management	✓	Nil	
Completed by Environmental Contractor (South East Environmental)				Signed: <i>Melissa Mass</i>	Date: 31/03/2021

PF FORMATION – ENVIRONMENTAL OPERATIONAL PROCEDURES

Hitchcock Road Sand Extraction and Rehabilitation Project, Maroota

The chapter, page number and strategy point number are references to the approved Environmental Strategy Appendix A – Environmental Operational Procedures.

CHAPTER Page No.	STRATEGY Point No.	MANAGEMENT CONTROLS	STATUS ✓ or ✗	COMPLAINTS RECEIVED	COMMENTS
<u>A2</u> 33-35	2.1	Noise Management	✓	Nil	
<u>A3</u> 36-39	3.1, 3.2	Air Quality Management	✓	Nil	Deposited dust results for April 2021 showed low levels at all locations.
<u>A4</u> 40-41	4.1	Access and Traffic	✓	Nil	Truck movements were not exceeded. Weighbridge records were reviewed.
<u>A5</u> 42-45	5.1, 5.2, 5.3	Erosion & Sediment Control	✓	Nil	
<u>A6</u> 46-49	6.1	Water Management	✓	Nil	
<u>A7</u> 50-54	7.1, 7.2	Rehabilitation & Vegetation Offset Management	✓	Nil	Rehabilitation work undertaken. Weed removal and habitat enhancement.
<u>A8</u> 55-56	8.1	Social Impact Management	✓	Nil	
<u>A9</u> 57-58	9.1	Heritage Management	✓	Nil	
<u>A10</u> 59-61	10.1	Visual Amenity Management	✓	Nil	
<u>A11</u> 62-64	11.1	Waste Management	✓	Nil	
<u>A12</u> 65-66	12.1	Emergency Response Management	✓	Nil	
<u>A13</u> 67-71	13.1, 13.2	Hazard, Risk and Safety Management	✓	Nil	
Completed by Environmental Contractor (South East Environmental)				Signed: <i>Melissa Mass</i>	Date: 30/04/2021

PF FORMATION – ENVIRONMENTAL OPERATIONAL PROCEDURES

Hitchcock Road Sand Extraction and Rehabilitation Project, Maroota

The chapter, page number and strategy point number are references to the approved Environmental Strategy Appendix A – Environmental Operational Procedures.

CHAPTER Page No.	STRATEGY Point No.	MANAGEMENT CONTROLS	STATUS ✓ or ✗	COMPLAINTS RECEIVED	COMMENTS
<u>A2</u> 33-35	2.1	Noise Management	✓	Nil	
<u>A3</u> 36-39	3.1, 3.2	Air Quality Management	✓	Nil	Deposited dust results for May 2021 showed low levels at all locations.
<u>A4</u> 40-41	4.1	Access and Traffic	✓	Nil	Truck movements were not exceeded. Weighbridge records were reviewed.
<u>A5</u> 42-45	5.1, 5.2, 5.3	Erosion & Sediment Control	✓	Nil	
<u>A6</u> 46-49	6.1	Water Management	✓	Nil	
<u>A7</u> 50-54	7.1, 7.2	Rehabilitation & Vegetation Offset Management	✓	Nil	Rehabilitation work undertaken. Weed removal and habitat enhancement.
<u>A8</u> 55-56	8.1	Social Impact Management	✓	Nil	
<u>A9</u> 57-58	9.1	Heritage Management	✓	Nil	
<u>A10</u> 59-61	10.1	Visual Amenity Management	✓	Nil	
<u>A11</u> 62-64	11.1	Waste Management	✓	Nil	
<u>A12</u> 65-66	12.1	Emergency Response Management	✓	Nil	
<u>A13</u> 67-71	13.1, 13.2	Hazard, Risk and Safety Management	✓	Nil	
Completed by Environmental Contractor (South East Environmental)				Signed: <i>Melissa Mass</i>	Date: 31/05/2021

PF FORMATION – ENVIRONMENTAL OPERATIONAL PROCEDURES

Hitchcock Road Sand Extraction and Rehabilitation Project, Maroota

The chapter, page number and strategy point number are references to the approved Environmental Strategy Appendix A – Environmental Operational Procedures.

CHAPTER Page No.	STRATEGY Point No.	MANAGEMENT CONTROLS	STATUS ✓ or ✗	COMPLAINTS RECEIVED	COMMENTS
<u>A2</u> 33-35	2.1	Noise Management	✓	Nil	
<u>A3</u> 36-39	3.1, 3.2	Air Quality Management	✓	Nil	Deposited dust results for June 2021 showed low levels at all locations.
<u>A4</u> 40-41	4.1	Access and Traffic	✓	Nil	Truck movements were not exceeded. Weighbridge records were reviewed.
<u>A5</u> 42-45	5.1, 5.2, 5.3	Erosion & Sediment Control	✓	Nil	
<u>A6</u> 46-49	6.1	Water Management	✓	Nil	
<u>A7</u> 50-54	7.1, 7.2	Rehabilitation & Vegetation Offset Management	✓	Nil	Rehabilitation work undertaken. Weed removal and habitat enhancement.
<u>A8</u> 55-56	8.1	Social Impact Management	✓	Nil	
<u>A9</u> 57-58	9.1	Heritage Management	✓	Nil	
<u>A10</u> 59-61	10.1	Visual Amenity Management	✓	Nil	
<u>A11</u> 62-64	11.1	Waste Management	✓	Nil	
<u>A12</u> 65-66	12.1	Emergency Response Management	✓	Nil	
<u>A13</u> 67-71	13.1, 13.2	Hazard, Risk and Safety Management	✓	Nil	
Completed by Environmental Contractor (South East Environmental)				Signed: <i>Melissa Mass</i>	Date: 30/06/2021

ATTACHMENT 6

LOCATION WEATHER CHART

Note: # Some blockages with PFF Maroota Weather Station from ~ mid 2020

Dixon & BOM weather station information included to verify rainfall

Month	PFF Maroota Station: Rainfall (mm)	BOM Richmond Rainfall (mm)	Dixons Maroota Quarry: Rainfall (mm)	BOM Maroota (Old Telegraph Rd) Rainfall (mm)
July 2020	109.8	103.6	161.8	182.8
August	35.4	45.6	52.2	54.2
September	22.4	23	33	35.6
October	72.4	96.8	103.6	115.2
November	33.4	54.8	46.8	57
December	101.6	122.2	133	158.2
January 2021	28.2	46.4	43.8	44.6
February	53	100	55.4	83.6
March	229.8	349.6	341.6	395.4
April	13.4	22	12.2	22.4
May	45.2	53.6	68.4	68.6
June 2021	29.2	33	38.6	46.8
Total (yr)	773.8 (#)	1050.6	1090.4	1264.4

ATTACHMENT 7

SITE CURRENT PHOTOS



Tailings pond in use (13b)



Tailings pond in use (13 + 14)



Tailings pond 12 coming back into use



Tailings pond 13a resting



Fresh water dam with agricultural rehabilitation in background



Rehabilitation area along east haul road



Covered (grass) stockpiles



Short term sorted stockpiles










Trig extraction area

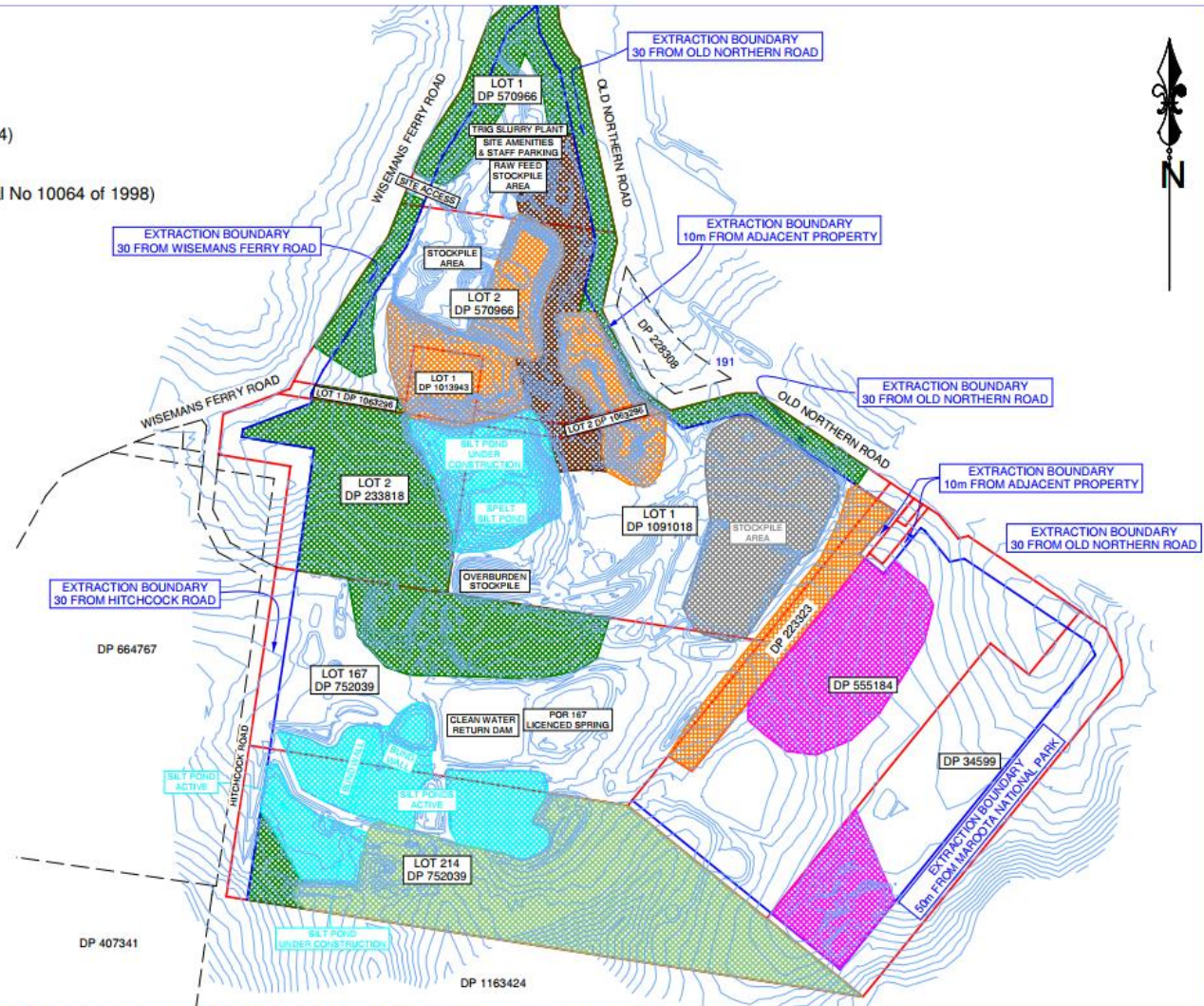


Pit 2 extraction area

ATTACHMENT 8

CURRENT SITE SURVEY PLAN


-  - Land under active rehabilitation
-  - Extraction areas approved under (PA 06_0104)
-  - Extraction areas approved under (LEC Appeal No 10064 of 1998)
-  - Area being prepared for extraction
-  - Proposed rehabilitation offset area
-  - Stockpile areas
-  - silt ponds



NOTES:

- * Boundaries have been provided to Matthew Freeburn Surveyors from Landair Survey and are approximate only. No boundary investigation has been carried out for the purpose of this survey.
- * Contours shown in blue have been provided to Matthew Freeburn Surveyors from Landair Surveys. Contours depict the general topography. They do not represent exact levels other than at spot levels shown. Survey date was 29/5/2017.
- * The position of features are indicative only.
- * 101.50 indicates natural surface level.
- * No trees have been shown.

PROJECT: "PF FORMATION - SITE PLAN FOR HITCHCOCK ROAD SAND PROJECT 06_0104".

Client:	<div>FREEBURN</div> <div></div>	<div>MATTHEW FREEBURN</div> <div>LAND, ENGINEERING & MINING SURVEYOR</div> <div>SUITE 2, 1st FLOOR, "SURVEYOR HOUSE"</div> <div>2 CASTLEREAGH STREET</div> <div>PENRITH 2750</div>	<div>Telephone 02 4721 2289</div> <div>Fax 02 4721 5646</div> <div>email</div> <div>matthew@freeburnsurveyors.com</div>	<div>Date: 19/10/2020</div> <div>Ref: 34279</div> <div>Sheet 1 of 1</div> <div>Scale 1: 6000</div> <div>Datum: AHD</div> <div>Contour: 1.0m</div> <div>Surveyor: N/A</div> <div>Drawn By: CD</div> <div>Checked: MF</div> <div>Stored: 34279 SITE PLAN 201019 A3</div> <div>A3 SHEET</div>
---------	--	--	---	--

ATTACHMENT 9

WEIGHBRIDGE VERIFICATION CERTIFICATE

REPAIR AND VERIFICATION REPORT

Report Number	1364S 662 189S
Scale Owners Name	PF Formation
Address	1 Patricia Fay Drive Maroota NSW 2756
Instrument Serial Number	IN0054217
Digital Summing Indicator	Make: WMS Model: 3590EGT Serial No: 94035646
Total Capacity / Resolution	60 x 0.02 t
Digital indicator	Make: WMS Model: 3590EGT Serial No: 94035646 Capacity 60 t
Platform	Make: Aws Model: AWS106 Serial No: IN0054217 Capacity 60 t
Location	Weighbridge
Plant Number	Nil
Date of Verification	26-October-2020
Next Verification	October-2021
Certified Masses Used	PCS 2088 PCS 1782

Report on Accuracy

Deck 1			
Mass Applied		Final Reading	
10.00 t		10.00 t	
20.00 t		20.00 t	
35.74 t		35.74 t	
47.56 t		47.56 t	
59.56 t		59.56 t	
Zero Test	Pass	Repeatability	Pass
Over Range	Pass	Eccentricity	Pass
Discrimination	Pass	Performance	Pass

Specification Of Test Using the guidelines of the Uniform Test Procedure for the Verification NTP 6.1 to 6.4

Service Report

Weighbridge calibration was within MPE during testing. Weighbridge was verified by SSS technician.

Compliance: "PASS" indicates that the reported final readings are within the tolerances specified in the test specification.

For and on behalf of Standard Scales & Services Pty. Ltd.

Report Number: RHH001

Tested By

Richard Hickey

Checked By

Jodie Attard

ATTACHMENT 10

**COMMUNITY CONSULTATIVE
COMMITTEE**

MEETING MINUTES

**Community Consultative Committee
Hitchcock Road and Lot 198 Maroota
Sand Extraction and Rehabilitation Projects**

Minutes - 10 November 2020 2:00pm

Attendance

Kristine McKenzie – The Hills Shire Council (THSC) – Chairperson

Robert Buckham – The Hills Shire Council (THSC)

Melissa Mass – South East Environmental

John Graham – PF Formation (PF)

Joshua Graham – PF Formation (PF)

Luke Graham – PF Formation (PF)

Dianna Rea – PF Formation (PF)

Shaunagh Hitchcock - Resident

Marianne Sheumack – Resident

Apologies

Lisa Aylward – Resident

Minutes of Previous Meeting

Last meeting in May was an electronic meeting and no issues were raised.

- Accepted

Matters Arising from Minutes

- None

Report on Current Status of Operations by Joshua Graham (PF)

- Business has continued to be busy. The local economy appears to have spiked due to border closures. There is a shortage of high-quality concrete sand in the Sydney Market, Anna Bay extraction limits are nearing their maximum. We have had to put on extra staff.
- No complaints have been received since our last meeting
- The 3-year Independent Environmental Audit (IEA) was carried out by a firm called RPS and completed on 14 August 2020. The audit found 4 non compliances. The full IEA & 2020 annual review (AEMR) are up on the PF website. The non-compliances can be summarized as follows:
 1. The first non compliance is related to the other non compliances.
 2. Extraction boundary markers were absent in certain areas where rehabilitation is taking place.
 3. Damaged sediment fences were observed along the southern boundary.
 4. The offset strategy has not been implemented and agreed by the Director – General.

We have developed an action plan in response to the audit, this has been submitted to DPIE and is on the website along with the audit report.

- Sand extraction has commenced on Lot 2 DP 555184 and all material is processed through the trig plant. Shaunagh asked if the water levels in Maroota spring will be affected and Josh advised her that we drilled 5 shallow wells in the new area, all supervised by a hydro to ensure the 2 m buffer rule is adhered to. A revised pit shell plan has been developed but has not been submitted for approval by the Director – General as yet however the existing pit shell plan will continue to guide extraction depths. Josh advised that a ground water study was conducted in 2018 by EMM Consulting (see attachment)
https://www.industry.nsw.gov.au/_data/assets/pdf_file/0005/283055/Fact-sheet-Marootagroundwater-study.pdf
- VENM is received at the site regularly, validation certificates are always obtained, and regos of trucks are recorded. Shaunagh was concerned about the VENM being contaminated and Josh advised her that we have protocols in place and regos of all trucks are recorded and we are making products out of the VENM.
- The Deerubbin Aboriginal Land Council have applied for approval for sand extraction next door. A discussion on the approval process took place.

Reporting

- A copy of the 2020 AEMR was handed out and will be posted on the PF Formation website.
- Independent Environmental Audit by RPS results & Annual review are up on the website

Environmental Matters

- No Complaints have been received
- Melissa handed out some graphs about water levels and rainfall and the graphs were explained. Due to excessive rain at times some wells were not accessible. Surface water testing was conducted and no abnormalities.
- Dust – it has been dusty due two dust storms in the last 6 months although levels are below the threshold.
- Rehab has been slow due to drought and COVID (staffing difficulties). The rehab is not growing to plan and the plants are growing slower. We will be looking into other avenues to promote growth.
- Marianne asked if we are doing more truck movements. Joshua replied that we average about 40 per day which is a lot lower than we have approval for. There are more trucks on the road but not due to extra activities on our sites.

General

- Shaunagh thanked PF for funding the Community defibrillator located near our letterbox at the entrance. Josh commented there is another located in the weighbridge and at Pit 5.
- Traffic Management Policy was implemented last year between Dixons, Hodgson Quarries and PF and was discussed.

Site Visit

- No site inspection was conducted due to COVID

Next Meeting

- The next meeting will be held on the 4th May 2021 at 2.00 pm

**Community Consultative Committee
Hitchcock Road and Lot 198 Maroota
Sand Extraction and Rehabilitation Projects**

Minutes - 10 May 2021 2:00pm

Attendance

Kristine McKenzie – The Hills Shire Council (THSC) – Chairperson
Daniel Giffney– The Hills Shire Council (THSC) John Graham – PF Formation (PF)
Joshua Graham – PF Formation (PF)
Luke Graham – PF Formation (PF)
Dianna Rea – PF Formation (PF)
Shaunagh Hitchcock - Resident

Apologies

Lisa Aylward – Resident
Marianne Sheumack – Resident
Melissa Mass – South East Environmental

Minutes of Previous

Meeting Last meeting in November 2020.

- Accepted

Matters Arising from Minutes

- None

Report on Current Status of Operations by Joshua Graham (PF)

- Sales are still up and our products are in high demand. Government projects and residential construction are still going strong. We have found there is a big demand for natural products for electrical, gas and pipe bedding backfill due to issues with contaminated recycled material and strict requirements on civil sites to only allow VENM or Natural quarry materials onto site.
- No complaints relating to the quarry operations have been received in the past six months however we have received some complaints in relation to truck driver behaviour on public roads.
- Extraction has continued into Pit 8 (Jurds, and Deans old place) We have found some really hard seams of laterite in some areas but overall, the pit is yielding good quality material. There is a buffer around the properties. The operational life of the quarry is expected to be extended to 2039.

- Kristine asked if we had any problems with the large amount of rain, Josh commented that Melissa noticed there was a wall slumping but not concerning. Our dams coped well with all the rainwater.
- The tailing ponds are being raised on Por 214. We have a contractor coming this week to place sediment fencing along the southern boundary before the walls are raised any further.
- We still do not have an answer for the MOD we submitted early last year. We have been told the application has been recommended for approval by the assessing officer and is now with a Director who will send the draft conditions before giving approval.

Reporting

- The LMP, WMP, AQMP, NMP, EMS, Pit shell plan and Rehabilitation bond review letter were submitted to DPIE in December 2020. DPIE then requested tracked copies of all the plans. The documents are only now being reviewed by DPIE and no further responses have been received.

Environmental Matters

- Ground water has responded to the recent rainfall. The shallow aquafer responded to the rain received in March immediately while the deeper aquafer took a little while before some recharge occurred, as can be seen on the graphs supplied.

New wells within Pit 8 have not been dipped since the March rainfall as the site is somewhat still underwater and too muddy to access. I expect they will be accessible for the May monitoring cycle.

Maps depicting the location of the monitoring wells to be supplied at the next meeting.

- Surface water testing was undertaken following the March rain event. There were no exceedances which required referral to the EPA.
- Air quality remains within the allowable limits.
- Rehabilitation work has been focused on treating annual weeds which have had a fantastic growing season over summer. Weeds of National Significance have been the main priority although all other weeds are also being controlled.

General

- The main issue of Shaunagh is the trucks and asked if we have a 3 system strike in place and we do and it is in conjunction with the other quarries in the area.
- Shaunagh asked about the Deerubin project and Josh will email the DA documents.

Site Visit

- Site inspection was conducted with Kristine.

Next Meeting

- The next meeting will be held on the 9th November 2021 at 2.00 pm