



**Boral Construction Materials
Materials Technical Services**

Unit 4, 3-5 Gibbon Road
Baulkham Hills NSW 2153 Australia
PO Box 400, Winston Hills NSW 2153

T: +61 (02) 9624 9900
F: +61 (02) 9624 9999

www.boral.com.au

TEST REPORT

FILE No.: 250 / 22
REQUEST No.: 102650

CLIENT: P.F. Formation - Maroota
PROJECT: Gravimetric Dust Monitoring at Maroota for October 2022

TEST PROCEDURE:

AS 3580.10.1 – Methods for Sampling and Analysis of Ambient Air
Method 10.1.1 – Determination of Particulate Matter, Deposited Matter – Gravimetric Method

Laboratory Sample Number:	275259	275260	275261	275262	275263
Site Location Number:	1	2	3	4	5
Sample Description:	Dust				
Sampling Period:	From	30/09/2022	to	1/11/2022	
Date Received:	From	4/11/2022	to	21/11/2022	
Date Tested:					

TEST RESULTS:

Insoluble Solids (g/m ² month):	1.95	2.29	2.93	1.85	1.61	± 0.04
Ash (g/m ² month):	0.67	0.54	1.18	0.48	0.45	± 0.03
Combustible Matter (g/m ² month):	1.27	1.75	1.75	1.37	1.16	
Soluble Matter (g/m ² month):	2.15	1.54	0.21	1.75	1.40	
Total Solids (g/m ² month):	4.10	3.83	3.14	3.60	3.01	
Volume of Liquid in the Gauge (mL):	2300	2800	2550	2550	3000	± 0.07

Uncertainty - 95% Confidence @ Factor 2

Notes:

- Samples were provided by the Client and tested as received.
- Refer to attached graphs.

Joshua Graham, Mat.File, File.



Approved Signatory: *Kdhai* S.Krishnamoorthy

Date: 5.12.22 Serial No. CHEM102650.SK.1

ACCREDITED FOR
**TECHNICAL
COMPETENCE**

Accredited for compliance with ISO/IEC 17025 - Testing
This report shall not be reproduced except in full without the approval of the Boral MTS Laboratory
Test results in this Test Report relate only to the samples tested

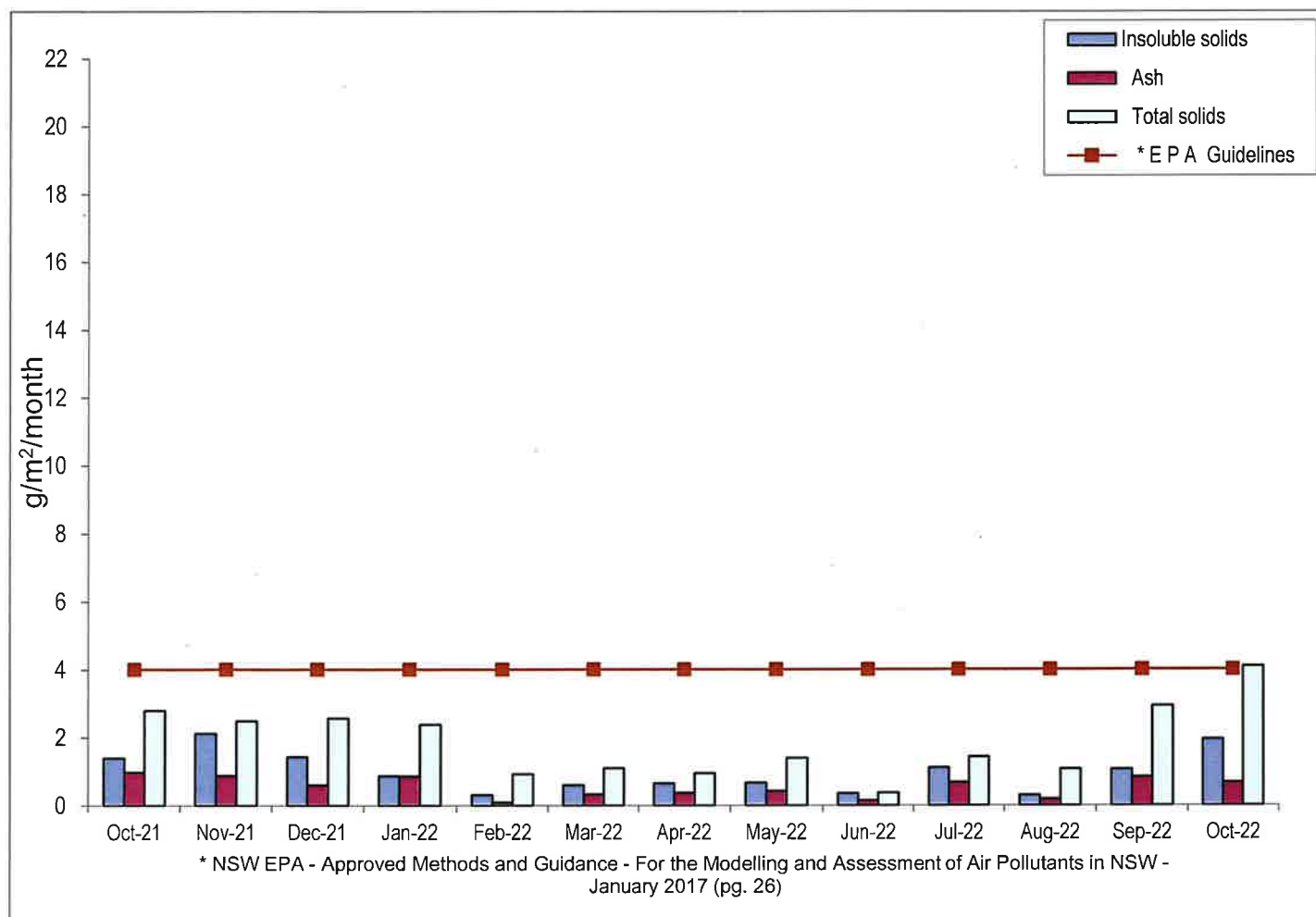


Boral Construction Materials
Boral Materials Technical Services

Dust Monitoring

P.F. Formation - Maroota Site 1
Maroota Public School

	Insoluble solids	Ash	* E P A Guidelines	Total solids
Oct-21	1.40	0.98	4	2.79
Nov-21	2.12	0.88	4	2.49
Dec-21	1.43	0.60	4	2.57
Jan-22	0.87	0.86	4	2.38
Feb-22	0.31	0.09	4	0.92
Mar-22	0.60	0.33	4	1.10
Apr-22	0.65	0.37	4	0.95
May-22	0.67	0.43	4	1.40
Jun-22	0.36	0.15	4	0.37
Jul-22	1.12	0.68	4	1.43
Aug-22	0.30	0.19	4	1.07
Sep-22	1.06	0.84	4	2.93
Oct-22	1.95	0.67	4	4.10



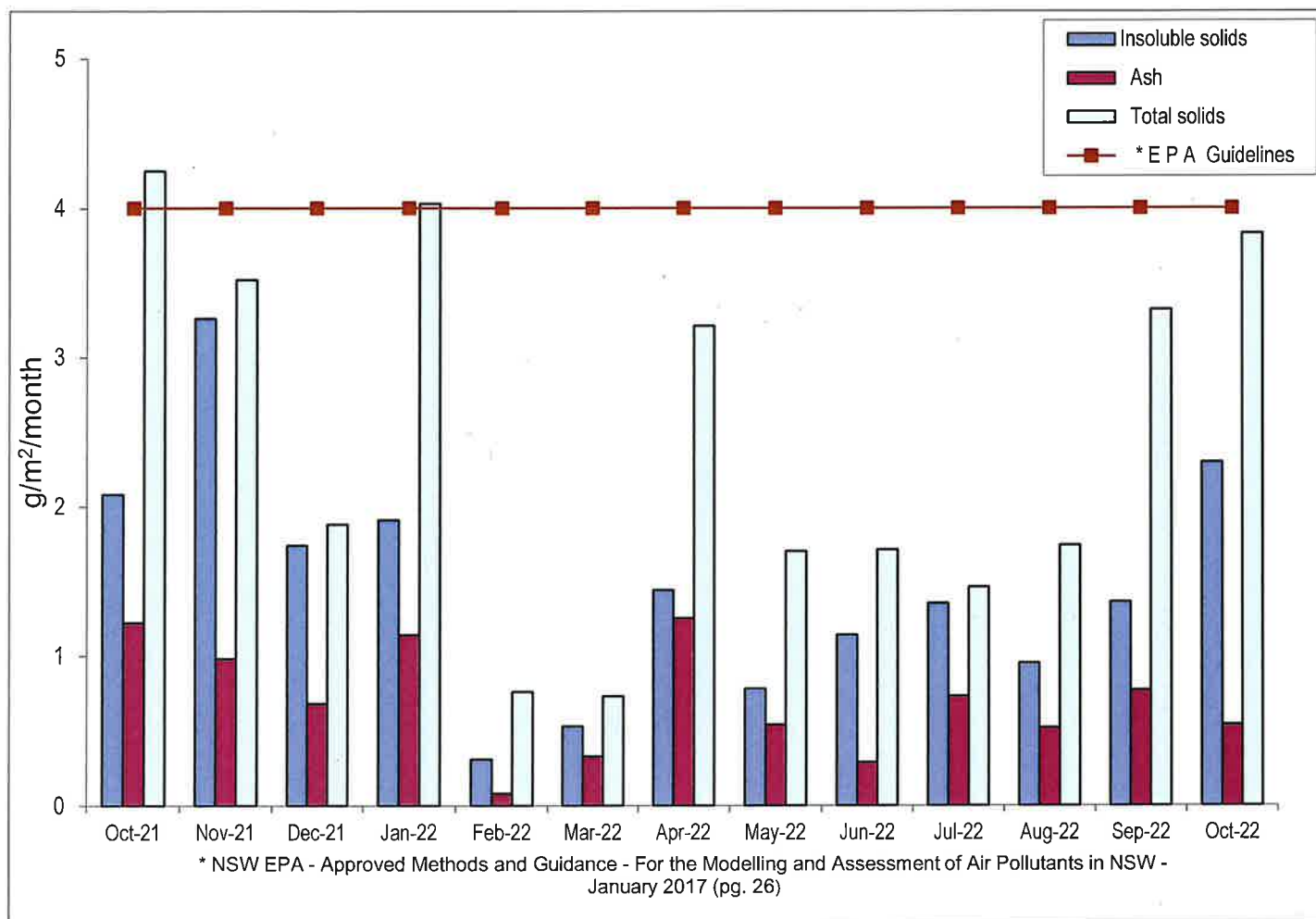


Boral Construction Materials
Boral Materials Technical Services

Dust Monitoring

P.F. Formation - Maroota Site 2
Hitchcock Road

	Insoluble solids	Ash	* E P A Guidelines	Total solids
Oct-21	2.08	1.22	4	4.25
Nov-21	3.26	0.98	4	3.52
Dec-21	1.74	0.68	4	1.88
Jan-22	1.91	1.14	4	4.03
Feb-22	0.31	0.08	4	0.76
Mar-22	0.53	0.33	4	0.73
Apr-22	1.44	1.25	4	3.21
May-22	0.78	0.54	4	1.70
Jun-22	1.14	0.29	4	1.71
Jul-22	1.35	0.73	4	1.46
Aug-22	0.95	0.52	4	1.74
Sep-22	1.36	0.77	4	3.32
Oct-22	2.29	0.54	4	3.83



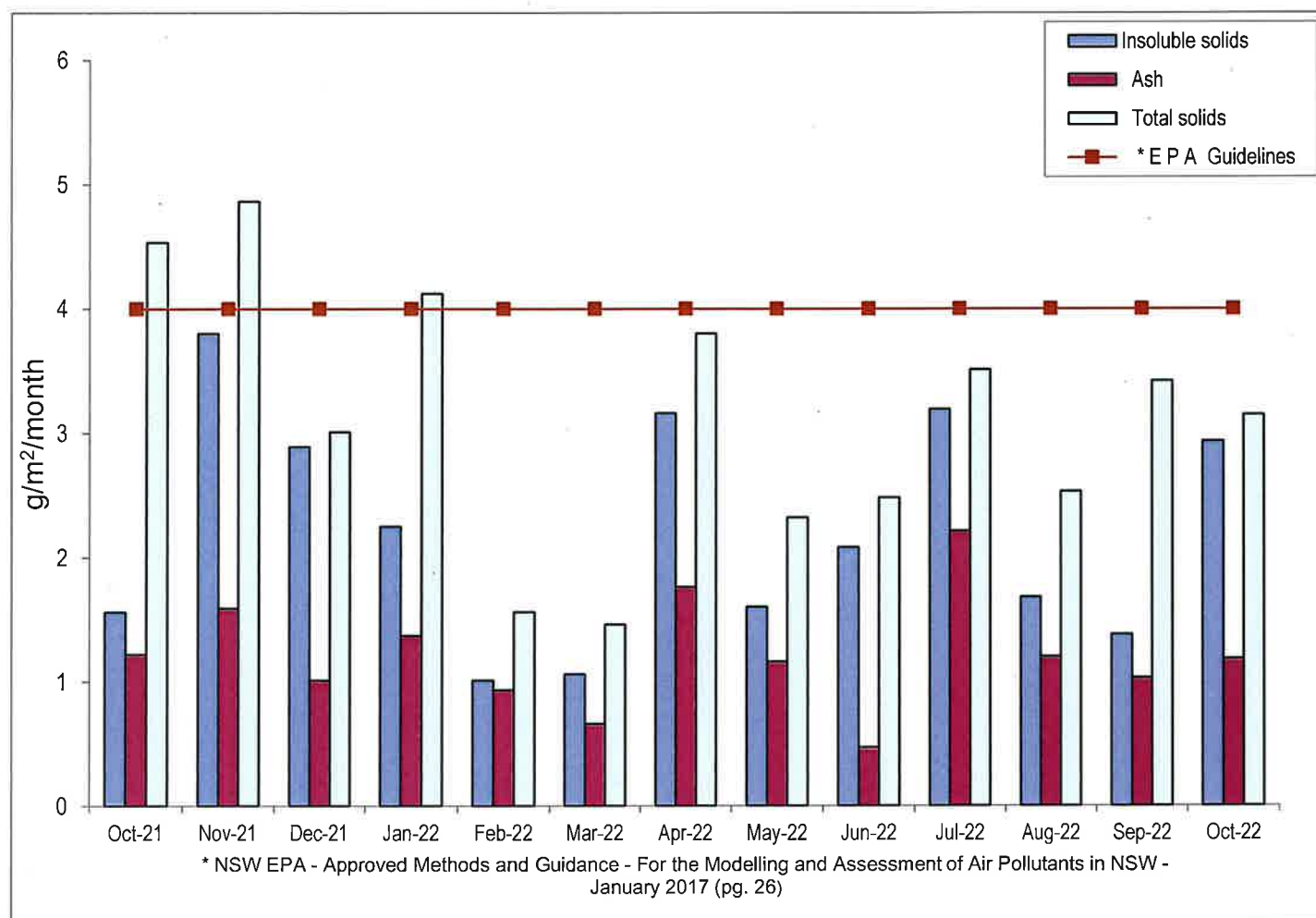


Boral Construction Materials
Boral Materials Technical Services

Dust Monitoring

P.F. Formation - Maroota Site 3
Jurd's House

	Insoluble solids	Ash	* E P A Guidelines	Total solids
Oct-21	1.56	1.22	4	4.53
Nov-21	3.80	1.59	4	4.86
Dec-21	2.89	1.01	4	3.01
Jan-22	2.25	1.37	4	4.12
Feb-22	1.01	0.93	4	1.56
Mar-22	1.06	0.66	4	1.46
Apr-22	3.16	1.76	4	3.80
May-22	1.60	1.16	4	2.32
Jun-22	2.08	0.47	4	2.48
Jul-22	3.19	2.21	4	3.51
Aug-22	1.68	1.20	4	2.53
Sep-22	1.38	1.03	4	3.42
Oct-22	2.93	1.18	4	3.14



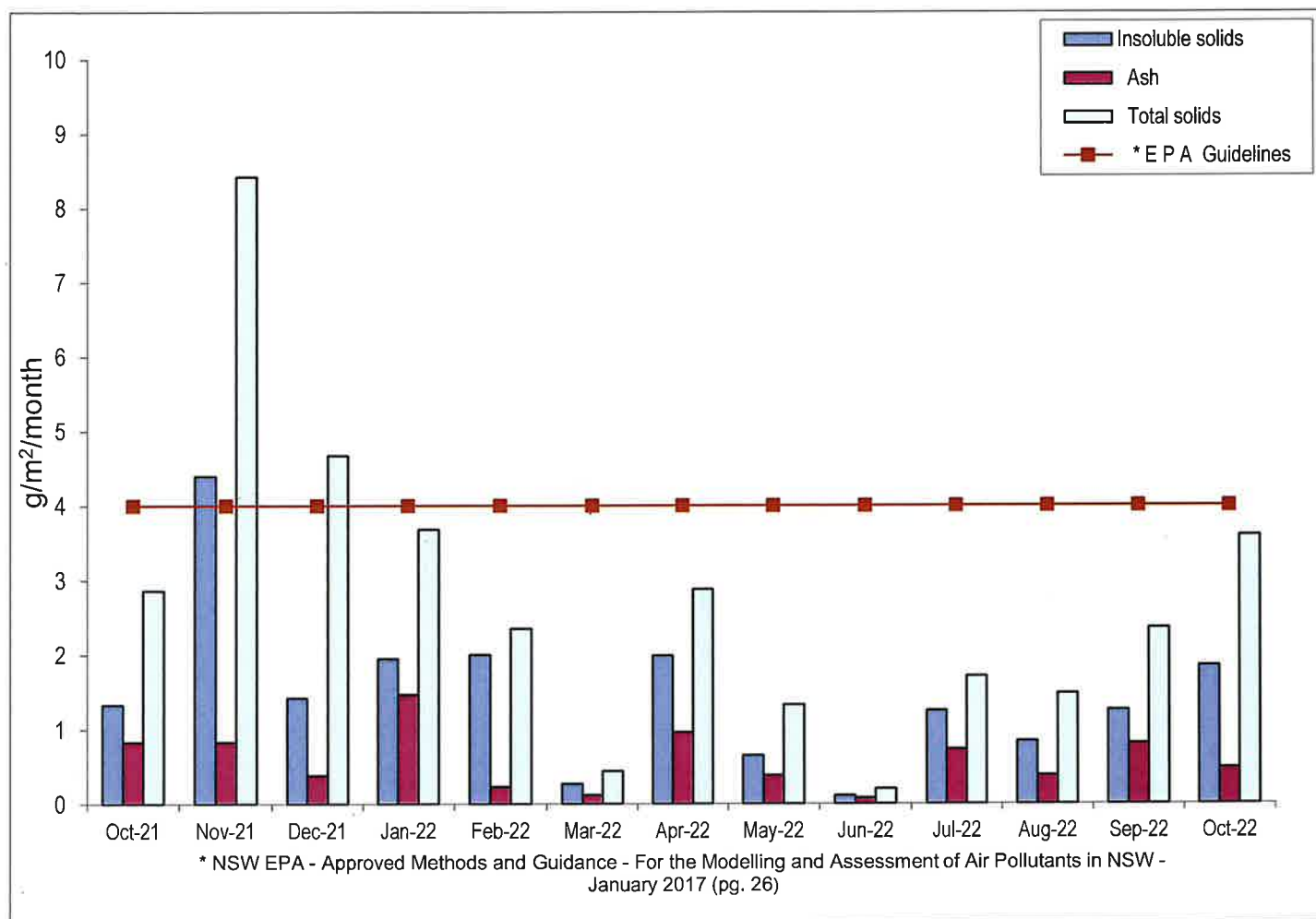


Boral Construction Materials
Boral Materials Technical Services

Dust Monitoring

P.F. Formation - Maroota Site 4
Josh's House (Lot 2 DP 510812)

	Insoluble solids	Ash	* E P A Guidelines	Total solids
Oct-21	1.33	0.83	4	2.86
Nov-21	4.39	0.83	4	8.42
Dec-21	1.42	0.38	4	4.67
Jan-22	1.95	1.47	4	3.68
Feb-22	2.00	0.23	4	2.35
Mar-22	0.27	0.12	4	0.44
Apr-22	1.99	0.96	4	2.88
May-22	0.65	0.38	4	1.33
Jun-22	0.11	0.08	4	0.20
Jul-22	1.25	0.73	4	1.71
Aug-22	0.84	0.38	4	1.48
Sep-22	1.26	0.81	4	2.36
Oct-22	1.85	0.48	4	3.60





Boral Construction Materials
Boral Materials Technical Services

Dust Monitoring

P.F. Formation - Maroota Site 5
Maroota Lodge

	Insoluble solids	Ash	* E P A Guidelines	Total solids
Oct-21	1.53	1.14	4	2.49
Nov-21	1.99	0.63	4	2.52
Dec-21	0.84	0.32	4	1.23
Jan-22	0.72	0.63	4	2.33
Feb-22	2.34	0.39	4	2.63
Mar-22	0.32	0.18	4	0.67
Apr-22	1.02	0.30	4	1.12
May-22	0.65	0.53	4	1.32
Jun-22	0.31	0.25	4	0.43
Jul-22	0.52	0.32	4	0.78
Aug-22	0.66	0.23	4	1.16
Sep-22	0.60	0.46	4	2.76
Oct-22	1.61	0.45	4	3.01

